

# Phospho-FOXO1/3 (Ser322/S325) Polyclonal Antibody <sup>dg</sup>

**DIA • AN**<sup>®</sup>  
by Elabscience

Catalog Number: E-AB-21016

**Note:** Centrifuge before opening to ensure complete recovery of vial contents.

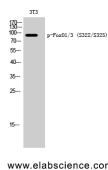
## Description

<b>Reactivity</b>	Human, Mouse, Rat
<b>Immunogen</b>	Synthesized peptide derived from human FoxO1/3 around the phosphorylation site of Ser322/S325
<b>Host</b>	Rabbit
<b>Isotype</b>	IgG
<b>Purification</b>	Affinity purification
<b>Conjugation</b>	Unconjugated
<b>Formulation</b>	PBS with 0.02% sodium azide, 0.5% protective protein and 50% glycerol, pH7.4

## Applications Recommended Dilution

<b>WB</b>	1:500-1:2000
<b>IHC</b>	1:100-1:300
<b>ELISA</b>	1:5000

## Data



Western Blot analysis of 3T3 cells with Phospho-FoxO1/3 (Ser322/S325) Polyclonal Antibody

**Observed Mw:97kDa**  
**Calculated Mw:70kDa**

## Preparation & Storage

**Storage** Store at -20°C. Avoid freeze / thaw cycles.

## Background

FOXO1 (Forkhead Box O1) is a Protein Coding gene. Diseases associated with FOXO1 include Rhabdomyosarcoma 2, Alveolar and Rhabdomyosarcoma. Among its related pathways are Constitutive Signaling by AKT1 E17K in Cancer and Common Cytokine Receptor Gamma-Chain Family Signaling Pathways. GO annotations related to this gene include transcription factor activity, sequence-specific DNA binding and chromatin binding. An important paralog of this gene is FOXO3. FOXO3 (Forkhead Box O3) is a Protein Coding gene. Diseases associated with FOXO3 include Rhabdomyosarcoma and Lung Cancer. Among its related pathways are Development IGF-1 receptor signaling and Constitutive Signaling by AKT1 E17K in Cancer. GO annotations related to this gene include transcription factor activity, sequence-specific DNA binding and protein kinase binding. An important paralog of this gene is FOXO1.

## For Research Use Only

A Reliable Research Partner in Life Science and Medicine

Toll-free: 1-888-852-8623

Web: [www.elabscience.com](http://www.elabscience.com)

Tel: 1-832-243-6086

Email: [techsupport@elabscience.com](mailto:techsupport@elabscience.com)

Fax: 1-832-243-6017