

SUPV3L1 Polyclonal Antibody

catalog number: E-AB-62230

Note: Centrifuge before opening to ensure complete recovery of vial contents.

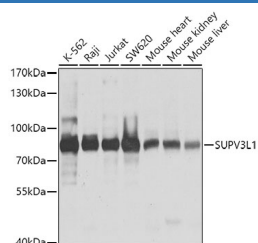
Description

Reactivity	Human;Mouse;Rat
Immunogen	Recombinant fusion protein of human SUPV3L1 (NP_003162.2).
Host	Rabbit
Isotype	IgG
Purification	Affinity purification
Buffer	Phosphate buffered solution, pH 7.4, containing 0.05% stabilizer and 50% glycerol.

Applications

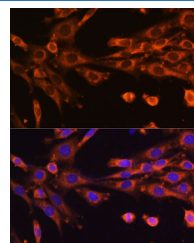
Applications	Recommended Dilution
WB	1:1000-1:4000
IF	1:50-1:200

Data



Western blot analysis of extracts of various cell lines using SUPV3L1 Polyclonal Antibody at dilution of 1:1000.

Observed-MV:88 kDa
Calculated-MV:87 kDa



Immunofluorescence analysis of NIH-3T3 cells using SUPV3L1 Polyclonal Antibody at dilution of 1:100 (40x lens). Blue: DAPI for nuclear staining.

Preparation & Storage

Storage	Store at -20°C Valid for 12 months. Avoid freeze / thaw cycles.
Shipping	The product is shipped with ice pack, upon receipt, store it immediately at the temperature recommended.

Background

SUPV3L1 (Suv3 Like RNA Helicase) is a Protein Coding gene. Diseases associated with SUPV3L1 include Uveoparotid Fever and Neuropathy, Hereditary Motor And Sensory, Russe Type. Gene Ontology (GO) annotations related to this gene include RNA binding.

For Research Use Only