

GKAP1 Polyclonal Antibody

catalog number: E-AB-18819

Note: Centrifuge before opening to ensure complete recovery of vial contents.

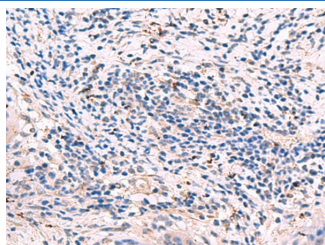
Description

Reactivity	Human;Mouse;Rat
Immunogen	Fusion protein of human GKAP1
Host	Rabbit
Isotype	IgG
Purification	Antigen affinity purification
Buffer	Phosphate buffered solution, pH 7.4, containing 0.05% stabilizer and 50% glycerol.

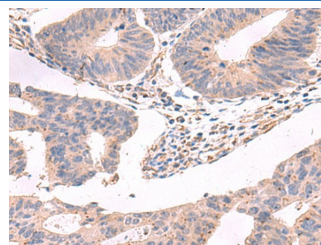
Applications Recommended Dilution

IHC	1:90-1:450
------------	------------

Data



Immunohistochemistry of paraffin-embedded Human cervical cancer tissue using GKAP1 Polyclonal Antibody at dilution of 1:95(×200)



Immunohistochemistry of paraffin-embedded Human colorectal cancer tissue using GKAP1 Polyclonal Antibody at dilution of 1:95(×200)

Preparation & Storage

Storage	Store at -20°C Valid for 12 months. Avoid freeze / thaw cycles.
Shipping	The product is shipped with ice pack, upon receipt, store it immediately at the temperature recommended.

Background

This gene encodes a protein that is highly similar to the mouse cGMP-dependent protein kinase anchoring protein 42kDa. The mouse protein has been found to localize with the Golgi and recruit cGMP-dependent protein kinase I alpha to the Golgi in mouse testes. It is thought to play a role in germ cell development. Transcript variants encoding different isoforms have been found for this gene.

For Research Use Only