

## Recombinant Human MDP1 Protein (His Tag)

**Catalog Number:** PKSH032728

**Note:** Centrifuge before opening to ensure complete recovery of vial contents.

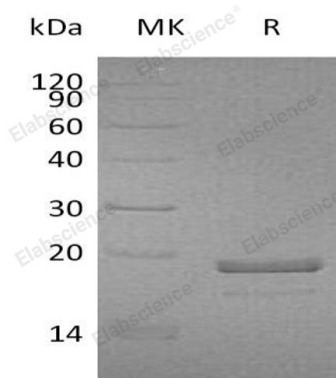
### Description

<b>Species</b>	Human
<b>Source</b>	HEK293 Cells-derived Human MDP1 protein Met 1-Ala176, with an C-terminal His
<b>Calculated MW</b>	21.1 kDa
<b>Observed MW</b>	18 kDa
<b>Accession</b>	Q86V88
<b>Bio-activity</b>	Not validated for activity

### Properties

<b>Purity</b>	> 95 % as determined by reducing SDS-PAGE.
<b>Concentration</b>	Subject to label value.
<b>Endotoxin</b>	< 1.0 EU per µg of the protein as determined by the LAL method.
<b>Storage</b>	Store at < -20°C, stable for 6 months. Please minimize freeze-thaw cycles.
<b>Shipping</b>	This product is provided as liquid. It is shipped at frozen temperature with blue ice/gel packs. Upon receipt, store it immediately at < -20°C.
<b>Formulation</b>	Supplied as a 0.2 µm filtered solution of 20mM Tris-HCl, 150mM NaCl, 10% Glycerol, pH 7.5.

### Data



> 95 % as determined by reducing SDS-PAGE.

### Background

MDP1, which is short for magnesium-dependent phosphatase 1, is a 176 aa. protein. It has 3 forms by different alternative splicing. This protein belongs to the HAD-like hydrolase superfamily, and usually takes its function with Magnesium. It can be inhibited by vanadate and zinc, and slightly by calcium. MDP1 is a Magnesium-dependent phosphatase which may act as a tyrosine phosphatase.

### For Research Use Only