

MTF2 Polyclonal Antibody

catalog number: E-AB-61511

Note: Centrifuge before opening to ensure complete recovery of vial contents.

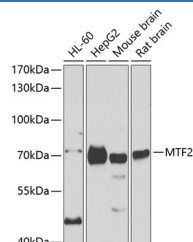
Description

Reactivity	Human;Mouse;Rat
Immunogen	Recombinant fusion protein of human MTF2
Host	Rabbit
Isotype	IgG
Purification	Affinity purification
Buffer	Phosphate buffered solution, pH 7.4, containing 0.05% stabilizer and 50% glycerol.

Applications

WB	1:500-1:2000
-----------	--------------

Data



Western blot analysis of extracts of various cell lines using MTF2 Polyclonal Antibody at 1:1000 dilution.

Observed-MW:67 kDa

Calculated-MW:29 kDa/55 kDa/60 kDa/67 kDa

Preparation & Storage

Storage	Store at -20°C Valid for 12 months. Avoid freeze / thaw cycles.
Shipping	The product is shipped with ice pack, upon receipt, store it immediately at the temperature recommended.

Background

Polycomb group (PcG) protein that specifically binds histone H3 trimethylated at 'Lys-36' (H3K36me3) and recruits the PRC2 complex, thus enhancing PRC2 H3K27me3 methylation activity. Regulates the transcriptional networks during embryonic stem cell self-renewal and differentiation (By similarity). Promotes recruitment of the PRC2 complex to the inactive X chromosome in differentiating XX ES cells and PRC2 recruitment to target genes in undifferentiated ES cells (By similarity). Required to repress Hox genes by enhancing H3K27me3 methylation of the PRC2 complex (By similarity). In some conditions may act as an inhibitor of PRC2 activity: able to activate the CDKN2A gene and promote cellular senescence by suppressing the catalytic activity of the PRC2 complex locally (By similarity). Binds to the metal-regulating element (MRE) of MT1A gene promoter (By similarity).

For Research Use Only