

Recombinant Human SENP2 Protein

Catalog Number: PKSH033026

Note: Centrifuge before opening to ensure complete recovery of vial contents.

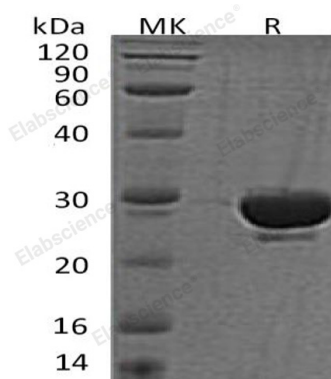
Description

Species	Human
Source	E.coli-derived Human SENP2 protein Asp363-Leu589
Calculated MW	26.8 kDa
Observed MW	29 kDa
Accession	Q9HC62
Bio-activity	Not validated for activity

Properties

Purity	> 95 % as determined by reducing SDS-PAGE.
Concentration	Subject to label value.
Endotoxin	< 1.0 EU per µg of the protein as determined by the LAL method.
Storage	Store at < -20°C, stable for 6 months. Please minimize freeze-thaw cycles.
Shipping	This product is provided as liquid. It is shipped at frozen temperature with blue ice/ gel packs. Upon receipt, store it immediately at < - 20°C.
Formulation	Supplied as a 0.2 µm filtered solution of 50mM HEPES, 5% Glycerol, pH 7.4.

Data



> 95 % as determined by reducing SDS-PAGE.

Background

SENP2 is an enzyme that belongs to the peptidase C48 family. SENP2 is a protease that catalyzes two essential functions in the SUMO pathway: processing of full-length SUMO1, SUMO2 and SUMO3 to their mature forms and deconjugation of SUMO1, SUMO2 and SUMO3 from targeted proteins. SUMO1 is a small ubiquitin-like protein that can be covalently conjugated to other proteins. It has been implicated as a down-regulator of CTNNB1 levels and may therefore be a modulator of the Wnt pathway.

For Research Use Only

Toll-free: 1-888-852-8623
Web: www.elabscience.com

Tel: 1-832-243-6086
Email: techsupport@elabscience.com

Fax: 1-832-243-6017