

## Elab Fluor® 488-conjugated beta Tubulin Monoclonal Antibody

catalog number: AN00293L

**Note:** Centrifuge before opening to ensure complete recovery of vial contents.

### Description

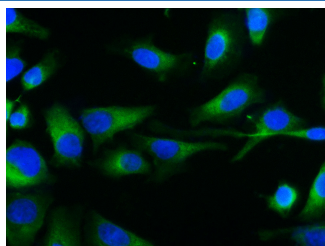
<b>Reactivity</b>	Human;Mouse;Rat;Zebrafish
<b>Immunogen</b>	Recombinant human TUBB protein by E. Coli
<b>Host</b>	Mouse
<b>Isotype</b>	IgG
<b>Clone</b>	2E8-2
<b>Purification</b>	Protein A/G Purification
<b>Conjugation</b>	Elab Fluor® 488(Ex/Em:493nm/519nm)
<b>Buffer</b>	PBS with 0.05% Proclin300, 1% protective protein and 50% glycerol, pH7.4

### Applications

### Recommended Dilution

<b>IF</b>	1:100-1:200
-----------	-------------

### Data



Immunofluorescence analysis of HeLa cells using Elab Fluor

® 488-conjugated beta Tubulin Monoclonal Antibody at dilution of 1:100

### Preparation & Storage

<b>Storage</b>	Store at -20°C Valid for 12 months. Avoid freeze / thaw cycles. Protected from prolonged exposure to light.
<b>Shipping</b>	The product is shipped with ice pack, upon receipt, store it immediately at the temperature recommended.

### Background

In eukaryotes there are six members of the tubulin superfamily.  $\alpha$ - and  $\beta$ -tubulins polymerize into microtubules, a major component of the eukaryotic cytoskeleton. Microtubules function in many essential cellular processes, including mitosis. Both  $\alpha$  and  $\beta$  tubulins have a mass of around 50 kDa. Tubulin was long thought to be specific to eukaryotes. Beta-tubulin gene is commonly used as a loading control for western blot.