

## HFM1 Polyclonal Antibody

catalog number: **E-AB-93085**

**Note:** Centrifuge before opening to ensure complete recovery of vial contents.

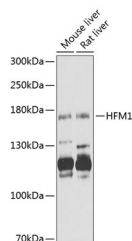
### Description

|                     |  |
|---------------------|--|
| <b>Reactivity</b>   | Mouse;Rat  |
| <b>Immunogen</b>    | Recombinant fusion protein of human HFM1   |
| <b>Host</b>         | Rabbit   |
| <b>Isotype</b>      | IgG  |
| <b>Purification</b> | Affinity purification  |
| <b>Buffer</b>       | Phosphate buffered solution, pH 7.4, containing 0.05% stabilizer and 50% glycerol. |

### Applications

|           |              |
|-----------|--------------|
| <b>WB</b> | 1:500-1:2000 |
|-----------|--------------|

### Data



Western blot analysis of extracts of various cell lines using HFM1 Polyclonal Antibody at 1:1000 dilution.

**Observed-MV:168 kDa**

**Calculated-MV:62 kDa/162 kDa**

### Preparation & Storage

|                 |  |
|-----------------|--|
| <b>Storage</b>  | Store at -20°C Valid for 12 months. Avoid freeze / thaw cycles.  |
| <b>Shipping</b> | The product is shipped with ice pack,upon receipt,store it immediately at the temperature recommended. |

### Background

The protein encoded by this gene is thought to be an ATP-dependent DNA helicase and is expressed mainly in germ-line cells. Defects in this gene are a cause of premature ovarian failure 9 (POF9).

### For Research Use Only