

BCAS4 Polyclonal Antibody

Catalog Number: E-AB-16277

Note: Centrifuge before opening to ensure complete recovery of vial contents.

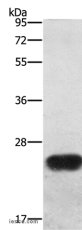
Description

Reactivity	Human
Immunogen	Synthetic peptide of human BCAS4
Host	Rabbit
Isotype	IgG
Purification	Affinity purification
Conjugation	Unconjugated
Formulation	PBS with 0.05% sodium azide and 50% glycerol, PH7.4

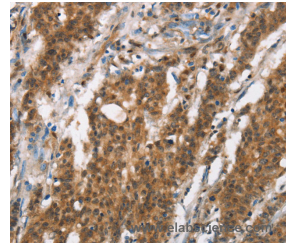
Applications Recommended Dilution

WB	1:500-1:2000
IHC	1:50-1:200

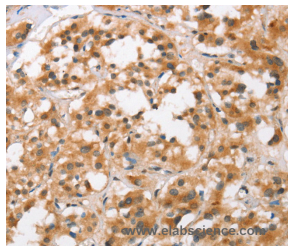
Data



Western Blot analysis of Mouse spleen tissue using BCAS4 Polyclonal Antibody at dilution of 1:1200
Calculated Mw:23kDa



Immunohistochemistry of paraffin-embedded Human gastric cancer using BCAS4 Polyclonal Antibody at dilution of 1:50



Immunohistochemistry of paraffin-embedded Human thyroid cancer using BCAS4 Polyclonal Antibody at dilution of 1:50

Preparation & Storage

Storage Store at -20°C. Avoid freeze / thaw cycles.

Background

The gene encoding BCAS4 (Breast carcinoma-amplified sequence 4), a 211 amino acid protein, is found in a region on chromosome 20 that is frequently amplified in human breast cancer. The amplification and translocation between the BCAS4 gene and the BCAS3 gene, with a 17q23 locus, results in a fusion transcript that is overexpressed in MCF-7 cells. Also, deletion of chromosomal region 20q13.13-q13.2 and resultant deletion of BCAS4, as well as three other genes, is

For Research Use Only

A Reliable Research Partner in Life Science and Medicine

Toll-free: 1-888-852-8623

Web: www.elabscience.com

Tel: 1-832-243-6086

Email: techsupport@elabscience.com

Fax: 1-832-243-6017

BCAS4 Polyclonal Antibody

Catalog Number: E-AB-16277



the cause of Okhiro syndrome, a disease characterized by ocular and upper limb anomalies.

For Research Use Only

A Reliable Research Partner in Life Science and Medicine

Toll-free: 1-888-852-8623

Tel: 1-832-243-6086

Fax: 1-832-243-6017

Web: www.elabscience.com

Email: techsupport@elabscience.com