

MSRB2 Polyclonal Antibody

Catalog Number: E-AB-63065



Note: Centrifuge before opening to ensure complete recovery of vial contents.

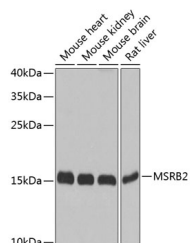
Description

Reactivity	Human, Mouse, Rat
Immunogen	Recombinant fusion protein of human MSRB2 (NP_036360.3).
Host	Rabbit
Isotype	IgG
Purification	Affinity purification
Conjugation	Unconjugated
Formulation	PBS with 0.02% sodium azide, 50% glycerol, pH7.3.

Applications Recommended Dilution

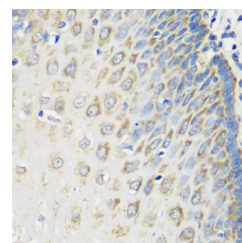
WB	1:500-1:2000
IHC	1:50-1:100

Data

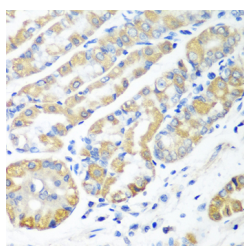


Western blot analysis of extracts of various cell lines using MSRB2 Polyclonal Antibody at dilution of 1:1000.

Observed Mw: 20kDa
Calculated Mw: 19kDa



Immunohistochemistry of paraffin-embedded Human esophagus using MSRB2 Polyclonal Antibody at dilution of 1:100 (40x lens).



Immunohistochemistry of paraffin-embedded Human stomach using MSRB2 Polyclonal Antibody at dilution of 1:100 (40x lens).

Preparation & Storage

Storage Store at -20°C. Avoid freeze / thaw cycles.

Background

MSRB2 (Methionine Sulfoxide Reductase B2) is a Protein Coding gene. Diseases associated with MSRB2 include Myotonia Congenita and Coffin-Siris Syndrome 1. Among its related pathways are Protein repair and Metabolism of

For Research Use Only

A Reliable Research Partner in Life Science and Medicine

Toll-free: 1-888-852-8623

Web: www.elabscience.com

Tel: 1-832-243-6086

Email: techsupport@elabscience.com

Fax: 1-832-243-6017

MSRB2 Polyclonal Antibody

Catalog Number: E-AB-63065



proteins. Gene Ontology (GO) annotations related to this gene include DNA-binding transcription factor activity and peptide-methionine (R)-S-oxide reductase activity. An important paralog of this gene is MSRB3.

For Research Use Only

A Reliable Research Partner in Life Science and Medicine

Toll-free: 1-888-852-8623

Tel: 1-832-243-6086

Fax: 1-832-243-6017

Web: www.elabscience.com

Email: techsupport@elabscience.com