

P2RX3 Polyclonal Antibody

Catalog Number:E-AB-13478



Note: Centrifuge before opening to ensure complete recovery of vial contents.

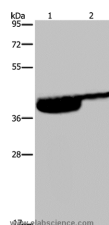
Description

Reactivity	Human
Immunogen	Synthetic peptide of human P2RX3
Host	Rabbit
Isotype	IgG
Purification	Affinity purification
Conjugation	Unconjugated
Formulation	PBS with 0.05% sodium azide and 50% glycerol, PH7.4

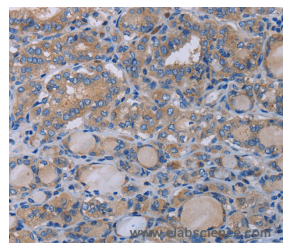
Applications Recommended Dilution

WB	1:200-1:1000
IHC	1:25-1:100

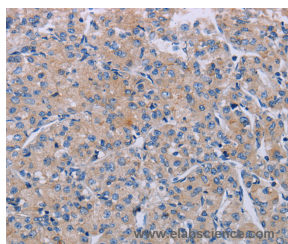
Data



Western Blot analysis of Human bladder and bladder transitional cell carcinoma tissue using P2RX3 Polyclonal Antibody at dilution of 1:250
Calculated Mw:44kDa



Immunohistochemistry of paraffin-embedded Human thyroid cancer using P2RX3 Polyclonal Antibody at dilution of 1:50



Immunohistochemistry of paraffin-embedded Human prostate cancer using P2RX3 Polyclonal Antibody at dilution of 1:50

Preparation & Storage

Storage Store at -20°C. Avoid freeze / thaw cycles.

Background

The product of this gene belongs to the family of purinoceptors for ATP. This receptor functions as a ligand-gated ion channel and may transduce ATP-evoked nociceptor activation. Mouse studies suggest that this receptor is important for peripheral pain responses, and also participates in pathways controlling urinary bladder volume reflexes. It is possible that

For Research Use Only

A Reliable Research Partner in Life Science and Medicine

Toll-free: 1-888-852-8623

Web: www.elabscience.com

Tel: 1-832-243-6086

Email: techsupport@elabscience.com

Fax: 1-832-243-6017

P2RX3 Polyclonal Antibody

Catalog Number:E-AB-13478



the development of selective antagonists for this receptor may have a therapeutic potential in pain relief and in the treatment of disorders of urine storage.

For Research Use Only

A Reliable Research Partner in Life Science and Medicine

Toll-free: 1-888-852-8623

Tel: 1-832-243-6086

Fax: 1-832-243-6017

Web: www.elabscience.com

Email: techsupport@elabscience.com