

## Biotin Anti-Mouse CD5 Antibody[53-7.3]

Catalog Number: E-AB-F1185B

Note: Centrifuge before opening to ensure complete recovery of vial contents.

### Description

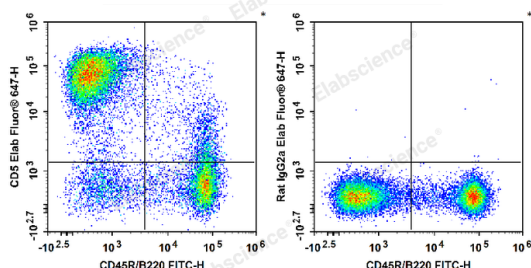
<b>Reactivity</b>	Mouse
<b>Host</b>	Rat
<b>Isotype</b>	Rat IgG2a, κ
<b>Clone No.</b>	53-7.3
<b>Isotype Control</b>	Biotin Rat IgG2a, κ Isotype Control[2A3] [Product E-AB-F09833B]
<b>Conjugation</b>	Biotin
<b>Storage Buffer</b>	Phosphate buffered solution, pH 7.2, containing 0.09% stabilizer.

### Applications

### Recommended usage

<b>FCM</b>	Each lot of this antibody is quality control tested by flow cytometric analysis. For flow cytometric staining, the suggested use of this reagent is $\leq 1.0 \mu\text{g}$ per $10^6$ cells in 100 $\mu\text{L}$ volume or 100 $\mu\text{L}$ of whole blood. It is recommended that the reagent be titrated for optimal performance for each application.
------------	-----------------------------------------------------------------------------------------------------------------------------------------------------------------------------------------------------------------------------------------------------------------------------------------------------------------------------------------------------------

### Data



C57BL/6 murine splenocytes are stained with FITC Anti-Mouse CD45R/B220 Antibody and Biotin Anti-Mouse CD5

Antibody followed by Streptavidin-Elab Fluor® 647 (Left).

Splenocytes are stained with FITC Anti-Mouse CD45R/B220

Antibody and Biotin Rat IgG2a, κ Isotype Control followed by

Streptavidin-Elab Fluor® 647 (Right).

### Preparation & Storage

<b>Storage</b>	Keep as concentrated solution. This product can be stored at 2-8°C for 24 months. Do not freeze.
<b>Shipping</b>	Ice bag

### Antigen Information

<b>Alternate Names</b>	CD5;Cd5;Ly-1;Lymphocyte antigen 1;Lyt-1
<b>Uniprot ID</b>	P13379
<b>Gene ID</b>	12507

### For Research Use Only

## Background

CD5 is a 67 kD protein, also known as Lyt-1, Ly-1, T1, Tp67, or Ly-12. It is a member of the scavenger receptor cysteine-rich protein superfamily (SRCR) and primarily expressed on thymocytes, T cells, and B-1 cells. Although mature  $\alpha/\beta$  T cells express high levels of CD5, very few  $\gamma/\delta$  T cells express this antigen. The interaction of CD5 with CD72, gp35-37, TCR, or BCR is involved in T and B cell activation.