

Recombinant Human SELP protein (His tag)

Catalog Number:PDMH100108



Note: Centrifuge before opening to ensure complete recovery of vial contents.

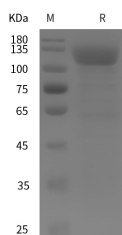
Description

Synonyms	P-selectin;CD62 antigen-like family member P;Granule membrane protein 140;GMP-140;Leukocyte-endothelial cell adhesion molecule 3;LECAM3;PADGEM
Species	Human
Expression Host	HEK293 Cells
Sequence	Met 1-Ala 771
Accession	P16109
Calculated Molecular Weight	84.7 kDa
Observed molecular weight	120 kDa
Tag	C-His

Properties

Purity	> 95 % as determined by reducing SDS-PAGE.
Endotoxin	Please contact us for more information.
Storage	Generally, lyophilized proteins are stable for up to 12 months when stored at -20 to -80°C. Reconstituted protein solution can be stored at 4-8°C for 2-7 days. Aliquots of reconstituted samples are stable at < -20°C for 3 months.
Shipping	This product is provided as lyophilized powder which is shipped with ice packs.
Formulation	Lyophilized from sterile PBS, pH 7.4. Normally 5 % - 8 % trehalose, mannitol and 0.01% Tween80 are added as protectants before lyophilization. Please refer to the specific buffer information in the printed manual.
Reconstitution	Please refer to the printed manual for detailed information.

Data



> 95 % as determined by reducing SDS-PAGE.

Background

P-selectin/CD62P is a single-pass type I membrane protein which is a member of the Selectin family. It consists 768 amino acid (aa). P-selectin is a cell surface glycoprotein expressed by activated platelets and endothelial cells. It induced expression in lung, liver, kidney and heart after endotoxin treatment. Ca²⁺-dependent receptor for myeloid cells that binds to carbohydrates on neutrophils and monocytes. It mediates the interaction of activated endothelial cells or platelets with leukocytes. The ligand recognized is sialyl-Lewis X. It also mediates rapid rolling of leukocyte rolling over vascular surfaces during the initial steps in inflammation through interaction with PSGL1. P-selectin interacts with SNX17,

For Research Use Only

A Reliable Research Partner in Life Science and Medicine

Toll-free: 1-888-852-8623

Web: www.elabscience.com

Tel: 1-832-243-6086

Email: techsupport@elabscience.com

Fax: 1-832-243-6017

Recombinant Human SELP protein (His tag)

Catalog Number:PDMH100108



PSGL1/SEPL, PODXL2, mediates neutrophil adhesion and leukocyte rolling. This interaction requires the sialyl-Lewis X epitope of PSGL1 and PODXL2, and specific tyrosine sulfation on PSGL1.

For Research Use Only

A Reliable Research Partner in Life Science and Medicine

Toll-free: 1-888-852-8623

Web: www.elabscience.com

Tel: 1-832-243-6086

Email: techsupport@elabscience.com

Fax: 1-832-243-6017