

THY1 Polyclonal Antibody

catalog number: E-AB-70078

Note: Centrifuge before opening to ensure complete recovery of vial contents.

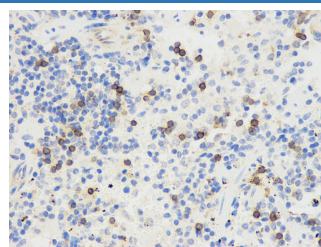
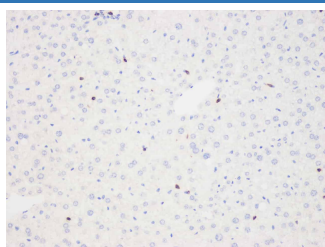
Description

Reactivity	Mouse
Immunogen	KLH conjugated Synthetic peptide corresponding to Mouse Thy1
Host	Rabbit
Isotype	IgG
Purification	Affinity purification
Buffer	Phosphate buffered solution, pH 7.4, containing 0.05% stabilizer, 1% protein protectant and 50% glycerol.

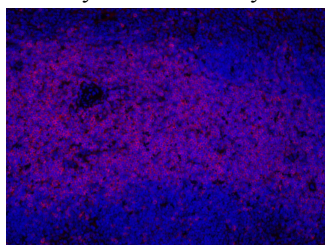
Applications

Applications	Recommended Dilution
IHC	1:500-1:1500
IF	1:200-1:1000

Data



Immunohistochemistry analysis of paraffin-embedded mouse liver using THY1 Polyclonal Antibody at dilution of 1:500. Immunohistochemistry analysis of paraffin-embedded mouse spleen using THY1 Polyclonal Antibody at dilution of 1:500.



Immunofluorescence analysis of paraffin-embedded mouse spleen using THY1 Polyclonal Antibody at dilution of 1:300.

Preparation & Storage

Storage	Store at -20°C Valid for 12 months. Avoid freeze / thaw cycles.
Shipping	The product is shipped with ice pack, upon receipt, store it immediately at the temperature recommended.

Background

For Research Use Only

Thy-1 or CD90 (Cluster of Differentiation 90) is a 25–37 kDa heavily N-glycosylated, glycosphosphatidylinositol(GPI) anchored conserved cell surface protein with a single V-like immunoglobulin domain, originally discovered as a thymocyte antigen. Thy-1 can be used as a marker for a variety of stem cells and for the axonal processes of mature neurons. Structural study of Thy-1 lead to the foundation of the Immunoglobulin superfamily, of which it is the smallest member, and led to some of the initial biochemical description and characterization of a vertebrate GPI anchor and also the first demonstration of tissue specific differential glycosylation.

For Research Use Only

Toll-free: 1-888-852-8623
Web: www.elabscience.com

Tel: 1-832-243-6086
Email: techsupport@elabscience.com

Fax: 1-832-243-6017

Rev. V1.6