

Recombinant Human CD200 protein (His Tag)

Catalog Number: PDMH100419



Note: Centrifuge before opening to ensure complete recovery of vial contents.

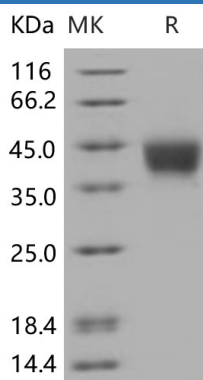
Description

Species	Human
Source	HEK293 Cells-derived Human CD200 protein Met1-Gly232, with an C-terminal His
Mol_Mass	25.4 kDa
Accession	P41217
Bio-activity	Not validated for activity

Properties

Purity	> 95% as determined by reducing SDS-PAGE.
Endotoxin	< 1.0 EU/mg of the protein as determined by the LAL method
Storage	Generally, lyophilized proteins are stable for up to 12 months when stored at -20 to -80 °C. Reconstituted protein solution can be stored at 4-8°C for 2-7 days. Aliquots of reconstituted samples are stable at < -20°C for 3 months.
Shipping	This product is provided as lyophilized powder which is shipped with ice packs.
Formulation	Lyophilized from a 0.2 µm filtered solution in PBS with 5% Trehalose and 5% Mannitol.
Reconstitution	It is recommended that sterile water be added to the vial to prepare a stock solution of 0.5 mg/mL. Concentration is measured by UV-Vis.

Data



> 95 % as determined by reducing SDS-PAGE.

Background

CD200 is a transmembrane immunoregulatory protein that belongs to the immunoglobulin superfamily. It contains one Ig like V type domain and one Ig like C2 type domain in its extracellular domain. CD200 is widely but not ubiquitously expressed. Its receptor (CD200R) is restricted primarily to mast cells, basophils, macrophages, and dendritic cells, which suggests myeloid cell regulation as the major function of CD200. CD200 and CD200R associate via their respective N-terminal Ig-like domains. In myeloid cells, CD200R initiates inhibitory signals following receptor-ligand contact. In T cells, CD200 functions as a co-stimulatory molecule independent of the CD28 pathway. In addition, CD200 also plays an important role in prevention of graft rejection, autoimmune diseases and spontaneous abortion.

For Research Use Only

A Reliable Research Partner in Life Science and Medicine
Tel:400-999-2100

Email:techsupport@elabscience.cn

Web:www.elabscience.cn

Rev. V1.3