

LTB4R Polyclonal Antibody

Catalog Number: E-AB-66402



Note: Centrifuge before opening to ensure complete recovery of vial contents.

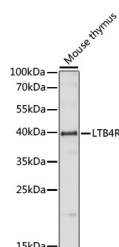
Description

Reactivity	Mouse
Immunogen	A synthetic peptide of human LTB4R (NP_858043.1).
Host	Rabbit
Isotype	IgG
Purification	Affinity purification
Conjugation	Unconjugated
Formulation	PBS with 0.02% sodium azide, 50% glycerol, pH7.3.

Applications Recommended Dilution

WB	1:500-1:2000
-----------	--------------

Data



Western blot analysis of extracts of Mouse thymus using LTB4R Polyclonal Antibody at dilution of 1:1000.

Observed MW:37kDa
Calculated Mw:37kDa

Preparation & Storage

Storage Store at -20°C. Avoid freeze / thaw cycles.

Background

LTB4R (Leukotriene B4 Receptor) is a Protein Coding gene. Diseases associated with LTB4R include Cicatricial Entropion and Spastic Entropion. Among its related pathways are RET signaling and Signaling by GPCR. Gene Ontology (GO) annotations related to this gene include G protein-coupled receptor activity and leukotriene receptor activity. An important paralog of this gene is LTB4R2.

For Research Use Only

A Reliable Research Partner in Life Science and Medicine

Toll-free: 1-888-852-8623

Web: www.elabscience.com

Tel: 1-832-243-6086

Email: techsupport@elabscience.com

Fax: 1-832-243-6017