

## Recombinant Interferon alpha-2 Monoclonal Antibody

catalog number: **AN301814L**

**Note:** Centrifuge before opening to ensure complete recovery of vial contents.

### Description

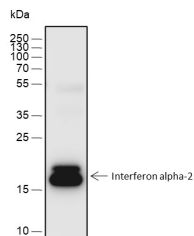
<b>Reactivity</b>	Mouse
<b>Immunogen</b>	Recombinant human Interferon alpha-2 fragment
<b>Host</b>	Rabbit
<b>Isotype</b>	IgG, κ
<b>Clone</b>	A526
<b>Purification</b>	Protein A purified
<b>Buffer</b>	PBS, 50% glycerol, 0.05% Proclin 300, 0.05% protein protectant.

### Applications

### Recommended Dilution

<b>WB</b>	1:1000-1:5000
-----------	---------------

### Data



Western Blot with Interferon alpha-2 Monoclonal Antibody at dilution of 1:5000. Lane 1: Mouse stomach

**Observed-MW:22 kDa**

**Calculated-MW:22 kDa**

### Preparation & Storage

<b>Storage</b>	Store at -20°C Valid for 12 months. Avoid freeze / thaw cycles.
<b>Shipping</b>	Ice bag

### Background

Interferon alpha 2, a type 1 interferon, is produced by macrophages. Interferon alpha 2 is secreted by virus-infected cells and inhibits other cells from further infection. Recombinant human interferon alpha 2 has been approved for therapeutic application in a range of human oncological and viral diseases. Three Interferon alpha 2 subvariants (2A, 2B, 2C) differ by only one or two amino acids at positions 23 and/or 34 of the mature protein.

### For Research Use Only