

Note: Centrifuge before opening to ensure complete recovery of vial contents.

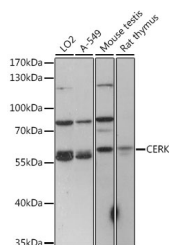
Description

Reactivity	Human, Mouse, Rat
Immunogen	A synthetic peptide of human CERK
Host	Rabbit
Isotype	IgG
Purification	Affinity purification
Conjugation	Unconjugated
Formulation	PBS with 0.01% thiomersal, 50% glycerol, pH 7.3.

Applications Recommended Dilution

WB	1:500-1:2000
-----------	--------------

Data



Western blot analysis of extracts of various cell lines using CERK Polyclonal Antibody at 1:1000 dilution.

Observed MW: 60kDa
Calculated Mw: 37kDa/59kDa

Preparation & Storage

Storage Store at -20°C. Avoid freeze/thaw cycles.

Background

CERK converts ceramide to ceramide 1-phosphate (C1P), a sphingolipid metabolite. Both CERK and C1P have been implicated in various cellular processes, including proliferation, apoptosis, phagocytosis, and inflammation (Kim et al., 2006 [PubMed 16488390]).

For Research Use Only

A Reliable Research Partner in Life Science and Medicine

Toll-free: 1-888-852-8623

Web: www.elabscience.com

Tel: 1-832-243-6086

Email: techsupport@elabscience.com

Fax: 1-832-243-6017