

PEDF/SERPINF1 Polyclonal Antibody

catalog number: **E-AB-93163**

Note: Centrifuge before opening to ensure complete recovery of vial contents.

Description

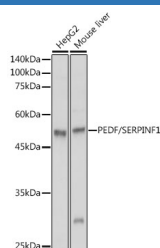
Reactivity	Human;Mouse
Immunogen	A synthetic peptide of human PEDF/SERPINF1
Host	Rabbit
Isotype	IgG
Purification	Affinity purification
Buffer	Phosphate buffered solution, pH 7.4, containing 0.05% stabilizer and 50% glycerol.

Applications

Recommended Dilution

WB	1:500-1:2000
-----------	--------------

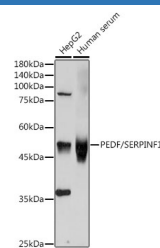
Data



Western blot analysis of extracts of various cell lines using PEDF/SERPINF1 Polyclonal Antibody at 1:1000 dilution.

Observed-MW:46 kDa

Calculated-MW:46 kDa



Western blot analysis of extracts of various cell lines using SERPINF1 Polyclonal Antibody at 1:1000 dilution.

Observed-MW:46 kDa

Calculated-MW:46 kDa

Preparation & Storage

Storage	Store at -20°C Valid for 12 months. Avoid freeze / thaw cycles.
Shipping	The product is shipped with ice pack, upon receipt, store it immediately at the temperature recommended.

Background

The protein encoded by this gene is a member of the serpin family, although it does not display the serine protease inhibitory activity shown by many of the other serpin family members. The encoded protein is secreted and strongly inhibits angiogenesis. In addition, this protein is a neurotrophic factor involved in neuronal differentiation in retinoblastoma cells.

For Research Use Only