

Recombinant Estrogen Receptor alpha Monoclonal Antibody

catalog number: **E-AB-81467**

Note: Centrifuge before opening to ensure complete recovery of vial contents.

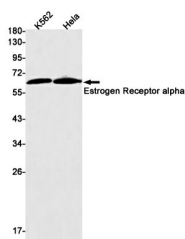
Description

Reactivity	Human
Immunogen	A synthetic peptide of human Estrogen Receptor alpha
Host	Rabbit
Isotype	IgG
Clone	R05-1E4
Purification	Affinity Purified
Buffer	50mM Tris-Glycine(pH 7.4), 0.15M NaCl, 40% Glycerol, 0.05% stabilizer and 0.05% protective protein.

Applications

Applications	Recommended Dilution
WB	1:500-1:1000
IHC	1:50-1:100
IF	1:20-1:100

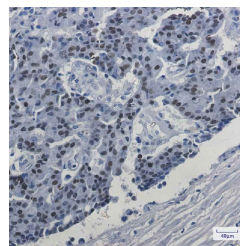
Data



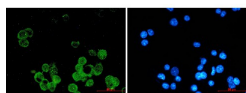
Western blot detection of Estrogen Receptor alpha in K562, Hela cell lysates using Estrogen Receptor alpha Rabbit mAb (1:1000 diluted). Predicted band size: 66kDa. Observed band size: 66kDa.

Observed-MW:66 kDa

Calculated-MW:66 kDa



Immunohistochemistry of Estrogen Receptor alpha in paraffin-embedded Human breast cancer tissue using Estrogen Receptor alpha Rabbit mAb at dilution 1:50



Immunofluorescence of Estrogen Receptor alpha (green) in MCF-7 using Estrogen Receptor alpha antibody at dilution 1:20, and DAPI (blue)

Preparation & Storage

Storage	Store at -20°C Valid for 12 months. Avoid freeze / thaw cycles.
Shipping	The product is shipped with ice pack, upon receipt, store it immediately at the temperature recommended.

For Research Use Only

Background

This gene encodes an estrogen receptor, a ligand-activated transcription factor composed of several domains important for hormone binding, DNA binding, and activation of transcription. The protein localizes to the nucleus where it may form a homodimer or a heterodimer with estrogen receptor 2. Estrogen and its receptors are essential for sexual development and reproductive function, but also play a role in other tissues such as bone. Estrogen receptors are also involved in pathological processes including breast cancer, endometrial cancer, and osteoporosis. Alternative splicing results in several transcript variants, which differ in their 5' UTRs and use different promoters.

For Research Use Only