

Phosphoserine Monoclonal Antibody

catalog number: E-AB-21334

Note: Centrifuge before opening to ensure complete recovery of vial contents.

Description

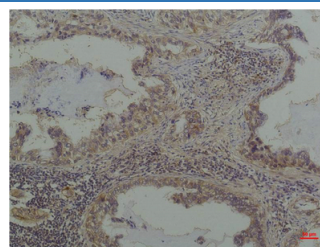
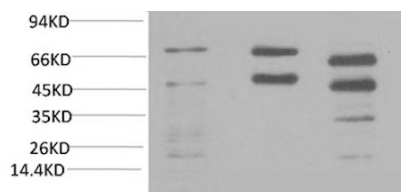
Reactivity	All
Immunogen	Purified Protein
Host	Mouse
Isotype	IgG
Clone	7A3
Purification	Protein A purification
Conjugation	Unconjugated
Buffer	Phosphate buffered solution, pH 7.4, containing 0.05% stabilizer, 0.5% protein protectant and 50% glycerol.

Applications

Recommended Dilution

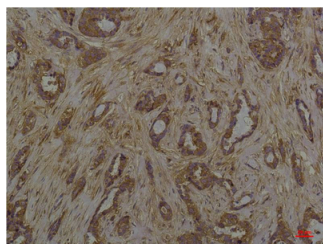
WB	1:500-1:2000
IHC	1:100-1:300

Data



Western Blot analysis of 1) HeLa, 2) Rat brain, 3) Mouse brain with Phosphoserine Monoclonal Antibody at dilution of 1:2000

Immunohistochemistry of paraffin-embedded Human lung carcinoma tissue with Phosphoserine Monoclonal Antibody at dilution of 1:200



Immunohistochemistry of paraffin-embedded Human breast carcinoma tissue with Phosphoserine Monoclonal Antibody at dilution of 1:200

Preparation & Storage

Storage	Store at -20°C Valid for 12 months. Avoid freeze / thaw cycles.
Shipping	The product is shipped with ice pack, upon receipt, store it immediately at the temperature recommended.

For Research Use Only