

Recombinant Human 14-3-3 epsilon/YWHAE Protein (GST Tag)



Catalog Number:PKSH032016

Note: Centrifuge before opening to ensure complete recovery of vial contents.

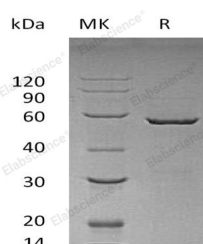
Description

Synonyms	14-3-3E;HEL2;KCIP-1;MDCR;MDS
Species	Human
Expression Host	E.coli
Sequence	Met 1-Gln255
Accession	P62258
Calculated Molecular Weight	56.0 kDa
Observed molecular weight	58 kDa
Tag	N-GST

Properties

Purity	> 90 % as determined by reducing SDS-PAGE.
Endotoxin	< 1.0 EU per µg of the protein as determined by the LAL method.
Storage	Generally, lyophilized proteins are stable for up to 12 months when stored at -20 to -80°C. Reconstituted protein solution can be stored at 4-8°C for 2-7 days. Aliquots of reconstituted samples are stable at < -20°C for 3 months.
Shipping	This product is provided as lyophilized powder which is shipped with ice packs.
Formulation	Lyophilized from a 0.2 µm filtered solution of 20mM PB, 150mM NaCl, pH 6.0. Normally 5 % - 8 % trehalose, mannitol and 0.01% Tween80 are added as protectants before lyophilization. Please refer to the specific buffer information in the printed man
Reconstitution	Please refer to the printed manual for detailed information.

Data



> 90 % as determined by reducing SDS-PAGE.

Background

14-3-3 Protein Epsilon acts as an adapter protein implicated in the regulation of a large spectrum of both general and specialized signaling pathways. 14-3-3 protein epsilon binds to a large number of partners, usually by recognition of a phosphoserine or phosphothreonine motif. Binding generally results in the modulation of the activity of the binding partner.

For Research Use Only

A Reliable Research Partner in Life Science and Medicine

Toll-free: 1-888-852-8623

Web: www.elabscience.com

Tel: 1-832-243-6086

Email: techsupport@elabscience.com

Fax: 1-832-243-6017