

Recombinant Human GFRA3/GFR-alpha-3 Protein (His^{dg} & Fc Tag)

DIA • AN[®]
by Elabscience

Catalog Number: PKSH031754

Note: Centrifuge before opening to ensure complete recovery of vial contents.

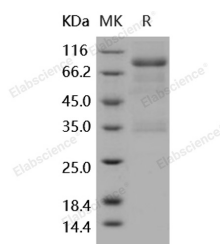
Description

Synonyms	GDNFR3
Species	Human
Expression Host	HEK293 Cells
Sequence	Met 1-Trp 382
Accession	NP_001487.2
Calculated Molecular Weight	67.3 kDa
Observed molecular weight	80 kDa
Tag	C-His-Fc
Bioactivity	Measured by its ability to bind mouse ARTN in a functional ELISA.

Properties

Purity	> 80 % as determined by reducing SDS-PAGE.
Endotoxin	< 1.0 EU per µg of the protein as determined by the LAL method.
Storage	Generally, lyophilized proteins are stable for up to 12 months when stored at -20 to -80°C. Reconstituted protein solution can be stored at 4-8°C for 2-7 days. Aliquots of reconstituted samples are stable at < -20°C for 3 months.
Shipping	This product is provided as lyophilized powder which is shipped with ice packs.
Formulation	Lyophilized from sterile PBS, pH 7.5 Normally 5 % - 8 % trehalose, mannitol and 0.01 % Tween80 are added as protectants before lyophilization. Please refer to the specific buffer information in the printed manual.
Reconstitution	Please refer to the printed manual for detailed information.

Data



> 80 % as determined by reducing SDS-PAGE.

Background

Glial cell line derived neurotrophic factor (GDNF) Family Receptor Alpha 3 (GFRA3) or GDNFRa3 is a member of the GDNF receptor family. It is a glycosylphosphatidylinositol (GPI)-linked cell surface receptor for both GDNF and NTN, and mediates activation of the RET tyrosine kinase receptor. GFRA3 / GDNFRa3 is a potent survival factor for central and peripheral neurons, and is essential for the development of kidneys and the enteric nervous system. Glial cell line-derived neurotrophic factor (GDNF) and neurturin (NTN) are its binding ligand which are two structurally related, potent neurotrophic factors that play key roles in the control of neuron survival and differentiation. GDNF promotes the formation of a physical complex between GFRA/GDNFRa and the orphan tyrosin kinase receptor Ret, thereby inducing

For Research Use Only

A Reliable Research Partner in Life Science and Medicine

Toll-free: 1-888-852-8623

Web: www.elabscience.com

Tel: 1-832-243-6086

Email: techsupport@elabscience.com

Fax: 1-832-243-6017

Recombinant Human GFRA3/GFR-alpha-3 Protein (His^{dg} & Fc Tag)



Catalog Number: PKSH031754

its tyrosine phosphorylation. The RET is a receptor tyrosine kinase representing the signal-transducing molecule of a multisubunit surface receptor complex for the GDNF, in which GFRA / GDNFRa acts as the ligand-binding component. The neurotrophic growth factor artemin binds selectively to GDNF family receptor $\alpha 3$ (GFRA3 / GDNFRa3), forming a molecular complex with the co-receptor RET which mediates downstream signaling. This signaling pathway has been demonstrated to play an important role in the survival and maintenance of nociceptive sensory neurons and in the development of sympathetic neurons.

For Research Use Only

A Reliable Research Partner in Life Science and Medicine

Toll-free: 1-888-852-8623

Web: www.elabscience.com

Tel: 1-832-243-6086

Email: techsupport@elabscience.com

Fax: 1-832-243-6017