

# Recombinant Human Mitochondrial Fission 1 Protein/FIS1 Protein (His Tag)



Catalog Number:PKSH032758

**Note:** Centrifuge before opening to ensure complete recovery of vial contents.

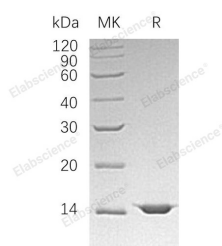
## Description

|                                    |   |
|------------------------------------|---|
| <b>Synonyms</b>                    | Mitochondrial Fission 1 Protein;FIS1 Homolog;hFis1;Tetratricopeptide Repeat Protein 11;TPR Repeat Protein 11;FIS1;TTC11;CGI-135 |
| <b>Species</b>                     | Human   |
| <b>Expression Host</b>             | E.coli  |
| <b>Sequence</b>                    | Met 1-Gly122  |
| <b>Accession</b>                   | Q9Y3D6  |
| <b>Calculated Molecular Weight</b> | 15.3 kDa  |
| <b>Observed molecular weight</b>   | 15 kDa  |
| <b>Tag</b>                         | C-His   |

## Properties

|                       |  |
|-----------------------|--|
| <b>Purity</b>         | > 95 % as determined by reducing SDS-PAGE.   |
| <b>Endotoxin</b>      | < 1.0 EU per µg of the protein as determined by the LAL method.  |
| <b>Storage</b>        | Generally, lyophilized proteins are stable for up to 12 months when stored at -20 to -80°C. Reconstituted protein solution can be stored at 4-8°C for 2-7 days. Aliquots of reconstituted samples are stable at < -20°C for 3 months.                    |
| <b>Shipping</b>       | This product is provided as lyophilized powder which is shipped with ice packs.  |
| <b>Formulation</b>    | Lyophilized from a 0.2 µm filtered solution of 20mM Tris-HCl, pH 8.0. Normally 5 % - 8 % trehalose, mannitol and 0.01% Tween80 are added as protectants before lyophilization.<br>Please refer to the specific buffer information in the printed manual. |
| <b>Reconstitution</b> | Please refer to the printed manual for detailed information.   |

## Data



> 95 % as determined by reducing SDS-PAGE.

## Background

Mitochondrial Fission 1 Protein (FIS1) is a member of the FIS1 family. FIS1 is a single-pass membrane protein and contains one TPR repeat. FIS1 is part of the mitochondrial complex that promotes mitochondrial fission. FIS1 can induce cytochrome C discharge from the mitochondrion to the cytosol, eventually leading to apoptosis. In addition, FIS1 participates in peroxisomal growth and division. The C-terminus of FIS1 is required for mitochondrial or peroxisomal localization, while the N-terminus is necessary for mitochondrial or peroxisomal fission, localization and regulation of the interaction with DNM1L.

## For Research Use Only

A Reliable Research Partner in Life Science and Medicine

Toll-free: 1-888-852-8623

Web: [www.elabscience.com](http://www.elabscience.com)

Tel: 1-832-243-6086

Email: [techsupport@elabscience.com](mailto:techsupport@elabscience.com)

Fax: 1-832-243-6017