

# ABCC8 Polyclonal Antibody

Catalog Number: E-AB-92872



**Note:** Centrifuge before opening to ensure complete recovery of vial contents.

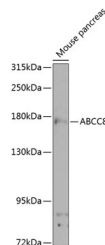
## Description

|                     |  |
|---------------------|--|
| <b>Reactivity</b>   | Mouse  |
| <b>Immunogen</b>    | Recombinant fusion protein of human ABCC8          |
| <b>Host</b>         | Rabbit   |
| <b>Isotype</b>      | IgG  |
| <b>Purification</b> | Affinity purification                              |
| <b>Conjugation</b>  | Unconjugated                                       |
| <b>Formulation</b>  | PBS with 0.02% sodium azide, 50% glycerol, pH 7.3. |

## Applications Recommended Dilution

|           |              |
|-----------|--------------|
| <b>WB</b> | 1:500-1:2000 |
|-----------|--------------|

## Data



Western blot analysis of extracts of mouse pancreas using ABCC8 Polyclonal Antibody at 1:1000 dilution.

**Observed MW: 177kDa**

**Calculated Mw: 5kDa/176kDa/177kDa**

## Preparation & Storage

**Storage** Store at -20°C. Avoid freeze/thaw cycles.

## Background

The protein encoded by this gene is a member of the superfamily of ATP-binding cassette (ABC) transporters. ABC proteins transport various molecules across extra- and intra-cellular membranes. ABC genes are divided into seven distinct subfamilies (ABC1, MDR/TAP, MRP, ALD, OABP, GCN20, White). This protein is a member of the MRP subfamily which is involved in multi-drug resistance. This protein functions as a modulator of ATP-sensitive potassium channels and insulin release. Mutations and deficiencies in this protein have been observed in patients with hyperinsulinemic hypoglycemia of infancy, an autosomal recessive disorder of unregulated and high insulin secretion. Mutations have also been associated with non-insulin-dependent diabetes mellitus type II, an autosomal dominant disease of defective insulin secretion. Alternatively spliced transcript variants have been found for this gene.

## For Research Use Only

A Reliable Research Partner in Life Science and Medicine

Toll-free: 1-888-852-8623

Tel: 1-832-243-6086

Fax: 1-832-243-6017

Web: [www.elabscience.com](http://www.elabscience.com)

Email: [techsupport@elabscience.com](mailto:techsupport@elabscience.com)