

# TMEM248 Polyclonal Antibody

catalog number: E-AB-52601

**Note:** Centrifuge before opening to ensure complete recovery of vial contents.

## Description

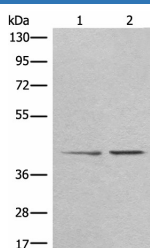
<b>Reactivity</b>	Human;Mouse;Rat
<b>Immunogen</b>	Fusion protein of human TMEM248
<b>Host</b>	Rabbit
<b>Isotype</b>	IgG
<b>Purification</b>	Antigen affinity purification
<b>Conjugation</b>	Unconjugated
<b>buffer</b>	Phosphate buffered solution, pH 7.4, containing 0.05% stabilizer and 50% glycerol.

## Applications

## Recommended Dilution

<b>WB</b>	1:500-1:2000
<b>IHC</b>	1:25-1:100

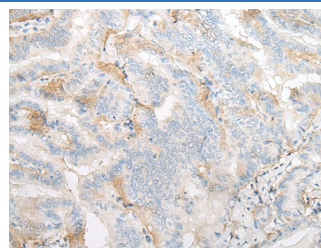
## Data



Western blot analysis of A172 and HEPG2 cell lysates using TMEM248 Polyclonal Antibody at dilution of 1:300

**Observed-MV: Refer to figures**

**Calculated-MV: 35 kDa**



Immunohistochemistry of paraffin-embedded Human thyroid cancer tissue using TMEM248 Polyclonal Antibody at dilution of 1:25(×200)

## Preparation & Storage

<b>Storage</b>	Store at -20°C Valid for 12 months. Avoid freeze / thaw cycles.
<b>Shipping</b>	The product is shipped with ice pack, upon receipt, store it immediately at the temperature recommended.

## Background

The function of this protein remains unknown.

## For Research Use Only