

## Cleaved-CASP3 p17 (D175) Polyclonal Antibody

catalog number: E-AB-30004

**Note:** Centrifuge before opening to ensure complete recovery of vial contents.

### Description

<b>Reactivity</b>	Human;Mouse;Rat
<b>Immunogen</b>	Synthesized peptide derived from the Internal region of human Caspase-3 p17
<b>Host</b>	Rabbit
<b>Isotype</b>	IgG
<b>Purification</b>	Affinity purification
<b>Conjugation</b>	Unconjugated
<b>Buffer</b>	Phosphate buffered solution, pH 7.4, containing 0.05% stabilizer, 0.5% protein protectant and 50% glycerol.

### Applications

Applications	Recommended Dilution
<b>WB</b>	1:500-2000
<b>IHC</b>	1:50-300
<b>IF</b>	1:50-300

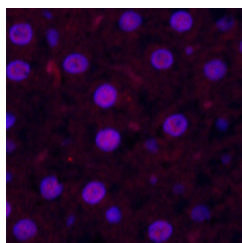
### Data



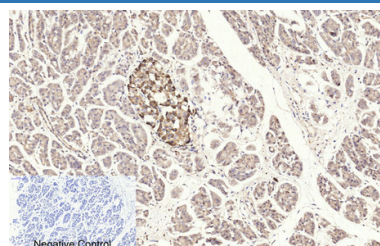
Western Blot analysis of various cells using Cleaved-CASP3 p17 (D175) Polyclonal Antibody at dilution of 1:1000.

**Observed-MW:20 kDa**

**Calculated-MW:32 kDa**



Immunofluorescence analysis of Rat liver tissue using Cleaved-CASP3 p17 (D175) Polyclonal Antibody at dilution of 1:200.



Immunohistochemistry of paraffin-embedded Human stomach cancer tissue using Cleaved-CASP3 p17 (D175) Polyclonal Antibody at dilution of 1:200.

### Preparation & Storage

<b>Storage</b>	Store at -20°C Valid for 12 months. Avoid freeze / thaw cycles.
<b>Shipping</b>	The product is shipped with ice pack, upon receipt, store it immediately at the temperature recommended.

### Background

### For Research Use Only

Involved in the activation cascade of caspases responsible for apoptosis execution. At the onset of apoptosis it proteolytically cleaves poly(ADP-ribose) polymerase (PARP) at a '216-Asp-Gly-217' bond. Cleaves and activates sterol regulatory element binding proteins (SREBPs) between the basic helix-loop-helix leucine zipper domain and the membrane attachment domain. Cleaves and activates caspase-6, -7 and -9. Involved in the cleavage of huntingtin.