

Neuronal Pentraxin 2/NPTX2 Polyclonal Antibody(Capture/Detector)

catalog number: AN000850P



Note: Centrifuge before opening to ensure complete recovery of vial contents.

Description

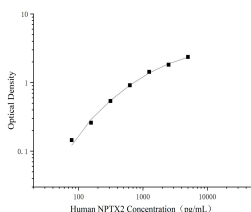
Reactivity	Human
Immunogen	Human LDL Native Protein
Host	Rabbit
Isotype	Rabbit IgG
Purification	Antigen Affinity Purification
Conjugation	Unconjugated
buffer	Phosphate buffered solution, pH 7.2, containing 0.05% proclin 300.

Applications

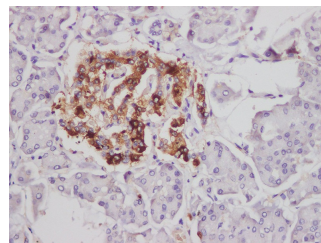
Recommended Dilution

ELISA Capture	2-8 µg/mL
ELISA Detector	0.1-0.4 µg/mL
IHC	1:500-1:1000

Data



Sandwich ELISA-Human LDL Native Protein standard curve. Background subtracted standard curve using Neuronal Pentraxin 2/NPTX2 antibody(AN000850P) (Capture), Neuronal Pentraxin 2/NPTX2 antibody(AN000850P)(Detector) in sandwich ELISA. The reference range value for Native Protein is 78-5000pg/mL.



Immunohistochemistry of paraffin-embedded Human pancreas using Neuronal Pentraxin 2/NPTX2 Polyclonal Antibody at dilution of 1:1200.

Preparation & Storage

Storage	Store at 4°C valid for 12 months or -20°C valid for long term storage, avoid freeze / thaw cycles.
Shipping	The product is shipped with ice pack, upon receipt, store it immediately at the temperature recommended.

Background

This gene encodes a member of the family of neuronal pentraxins, synaptic proteins that are related to C-reactive protein. This protein is involved in excitatory synapse formation. It also plays a role in clustering of alpha-amino-3-hydroxy-5-methyl-4-isoxazolepropionic acid (AMPA)-type glutamate receptors at established synapses, resulting in non-apoptotic cell death of dopaminergic nerve cells. Up-regulation of this gene in Parkinson disease (PD) tissues suggests that the protein may be involved in the pathology of PD.

For Research Use Only

A Reliable Research Partner in Life Science and Medicine
Tel: 400-999-2100

Email: techsupport@elabscience.cn

Web: www.elabscience.cn

Rev. V1.5