

Phospho-p70 S6 kinase alpha (Ser418) Polyclonal Antibody

catalog number: **E-AB-21476**

Note: Centrifuge before opening to ensure complete recovery of vial contents.

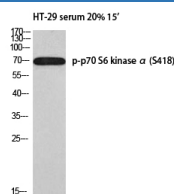
Description

Reactivity	Human;Mouse;Rat
Immunogen	Synthesized peptide derived from human p70 S6 kinase α around the phosphorylation site of Ser418
Host	Rabbit
Isotype	IgG
Purification	Affinity purification
Buffer	Phosphate buffered solution, pH 7.4, containing 0.05% stabilizer, 0.5% protein protectant and 50% glycerol.

Applications

Applications	Recommended Dilution
WB	1:500-1:2000
IHC	1:100-1:300
IF	1:200-1:1000

Data



Western Blot analysis of HT-29 serum 20% 15' cells using
Phospho-p70 S6 kinase alpha (Ser418) Polyclonal Antibody
at dilution of 1:1000

Observed-MW:60 kDa

Calculated-MW:59 kDa

Preparation & Storage

Storage	Store at -20°C Valid for 12 months. Avoid freeze / thaw cycles.
Shipping	The product is shipped with ice pack, upon receipt, store it immediately at the temperature recommended.

Background

P70 S6 Kinase alpha is a member of the RSK (ribosomal S6 kinase) family of serine/threonine kinases and contains 2 non-identical kinase catalytic domains. It phosphorylates several residues of the S6 ribosomal protein. The kinase activity of this protein is activated by serine/threonine phosphorylation and protein kinase C and inactivated by type 2A phosphatase. Activation leads to an increase in protein synthesis and cell proliferation. Overexpression of this kinase is involved in some breast cancer cell lines. Alternate translational start sites have been described and alternate transcriptional splice variants have been observed but have not been thoroughly characterized.

For Research Use Only