

FITC Anti-Human CD21 Antibody[HB5]

Catalog Number: E-AB-F1377C

Note: Centrifuge before opening to ensure complete recovery of vial contents.

Description

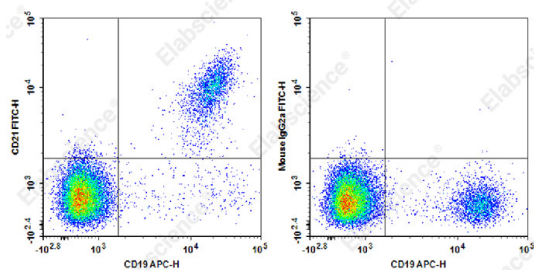
Reactivity	Human
Host	Mouse
Isotype	Mouse IgG2a, κ
Clone No.	HB5
Isotype Control	FITC Mouse IgG2a, κ Isotype Control[C1.18.4] [Product E-AB-F09802C]
Conjugation	FITC
Conjugation Information	FITC is designed to be excited by the Blue laser (488 nm) and detected using an optical filter centered near 530 nm (e.g., a 525/40 nm bandpass filter).
Storage Buffer	Phosphate buffered solution, pH 7.2, containing 0.09% stabilizer and 1% protein protectant.

Applications

Recommended usage

FCM	Each lot of this antibody is quality control tested by flow cytometric analysis. The amount of the reagent is suggested to be used 5 μL of antibody per test (million cells in 100 μL staining volume or per 100 μL of whole blood). Please check your vial before the experiment. Since applications vary, the appropriate dilutions must be determined for individual use.
------------	---

Data



Staining of normal human peripheral blood cells with APC Anti-Human CD19 Antibody and FITC Anti-Human CD21 Antibody[HB5] (left) or FITC Mouse IgG2a, κ Isotype Control (right). Cells in the lymphocytes gate were used for analysis.

Preparation & Storage

Storage	Keep as concentrated solution. This product can be stored at 2-8°C for 12 months. Please protected from prolonged exposure to light and do not freeze.
Shipping	Ice bag

Antigen Information

Alternate Names	Complement receptor type 2;CR2;Cr2;Complement C3d receptor;Epstein-Barr virus receptor;EBV receptor;CD21
Uniprot ID	P20023

For Research Use Only

Gene ID

1380

Background

CD21 is a 145 kD transmembrane protein also known as complement C3d receptor (C3dR), complement receptor 2 (CR2), and Epstein-Barr virus receptor. CD21 is expressed on B cells, follicular dendritic cells, subsets of normal thymocytes and T cells, and some epithelial cells. CD21 is the receptor used by Epstein-Barr virus to infect B cells and is also the complement receptor for C3d. CD21 has also been shown to interact with a number of proteins, including CD23, CD19, annexin VI, CD81, iC3b, complement receptor 1 (CR1, CD35), and interferon-alpha 1 (IFN- α 1).

For Research Use Only