

## LAMP3 Polyclonal Antibody

**catalog number: E-AB-60794**

**Note:** Centrifuge before opening to ensure complete recovery of vial contents.

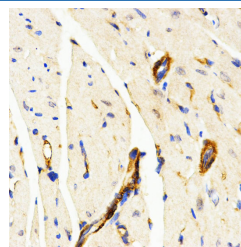
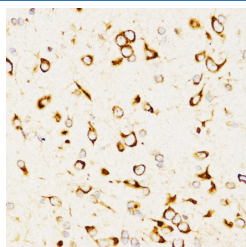
### Description

<b>Reactivity</b>	Human;Mouse;Rat
<b>Immunogen</b>	A synthetic peptide of human LAMP3
<b>Host</b>	Rabbit
<b>Isotype</b>	IgG
<b>Purification</b>	Affinity purification
<b>Buffer</b>	Phosphate buffered solution, pH 7.4, containing 0.05% stabilizer and 50% glycerol.

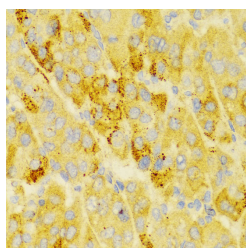
### Applications Recommended Dilution

<b>IHC</b>	1:50-1:100
------------	------------

### Data



Immunohistochemistry of paraffin-embedded Rat brain using LAMP3 Polyclonal Antibody at dilution of 1:200 (40x lens). Immunohistochemistry of paraffin-embedded Mouse heart using LAMP3 Polyclonal Antibody at dilution of 1:200 (40x lens).



Immunohistochemistry of paraffin-embedded Human liver cancer using LAMP3 Polyclonal Antibody at dilution of 1:100 (40x lens).

### Preparation & Storage

<b>Storage</b>	Store at -20°C Valid for 12 months. Avoid freeze / thaw cycles.
<b>Shipping</b>	The product is shipped with ice pack, upon receipt, store it immediately at the temperature recommended.

### Background

Dendritic cells (DCs) are the most potent antigen-presenting cells. Immature DCs efficiently capture antigens and differentiate into interdigitating dendritic cells (IDCs) in lymphoid tissues that induce primary T-cell responses.

### For Research Use Only