

## Histone H3 Polyclonal Antibody

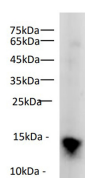
catalog number: E-AB-40520

**Note:** Centrifuge before opening to ensure complete recovery of vial contents.

Description	
<b>Reactivity</b>	Human;Mouse;Rat
<b>Immunogen</b>	Synthetic peptide derived from N-terminus of human Histone H3 protein conjugated to keyhole limpet haemocyanin.
<b>Host</b>	Rabbit
<b>Isotype</b>	IgG
<b>Purification</b>	Antigen Affinity Purification
<b>Conjugation</b>	Unconjugated
<b>Buffer</b>	PBS with 0.05% Proclin300, 1% protective protein and 50% glycerol, pH7.4

Applications	Recommended Dilution
WB	1:5000-10000

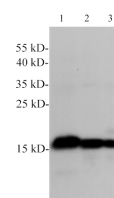
### Data



Western blot of Mouse spleen lysates with anti-Histone H3 pAb at dilution of 1:1000.

**Observed-MW:15 kDa**

**Calculated-MW:15 kDa**



Western Blotting with anti-Histone H3 polyclonal antibody at dilution of 1:5000. Lane 1:HT-29 cell lysates, Lane 2: NIH/3T3 cell lysates, Lane 3: C6

**Observed-MW:15 kDa**

**Calculated-MW:15 kDa**

Preparation & Storage	
<b>Storage</b>	Store at -20°C Valid for 12 months. Avoid freeze / thaw cycles.
<b>Shipping</b>	The product is shipped with ice pack,upon receipt,store it immediately at the temperature recommended.

Background	
Histone H3 is one of the DNA-binding proteins found in the chromatin of all eukaryotic cells. H3 along with four core histone proteins binds to DNA forming the structure of the nucleosome. This antibody is not cross-reactive with other histones.	