

## Zebrafish PPP1R3G Polyclonal Antibody

catalog number: **E-AB-40563**

**Note:** Centrifuge before opening to ensure complete recovery of vial contents.

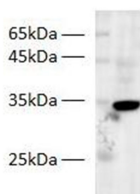
### Description

|                     |  |
|---------------------|--|
| <b>Reactivity</b>   | Zebrafish  |
| <b>Immunogen</b>    | Recombinant human PPP1R3G protein expressed by E.coli                    |
| <b>Host</b>         | Rabbit   |
| <b>Isotype</b>      | IgG  |
| <b>Purification</b> | Antigen Affinity Purification  |
| <b>Buffer</b>       | PBS with 0.05% Proclin300, 1% protective protein and 50% glycerol, pH7.4 |

### Applications Recommended Dilution

|           |            |
|-----------|------------|
| <b>WB</b> | 1:500-1000 |
|-----------|------------|

### Data



Western blot of Zebrafish whole lysates with anti-PPP1R3G rabbit polyclonal antibody at dilution of 1:500.

**Observed-MW:30 kDa**

**Calculated-MW:30 kDa**

### Preparation & Storage

|                 |  |
|-----------------|--|
| <b>Storage</b>  | Store at -20°C Valid for 12 months. Avoid freeze / thaw cycles.  |
| <b>Shipping</b> | The product is shipped with ice pack, upon receipt, store it immediately at the temperature recommended. |

### Background

Glycogen-targeting subunit for protein phosphatase 1 (PP1). Involved in the regulation of hepatic glycogenesis in a manner coupled to the fasting-feeding cycle and distinct from other glycogen-targeting subunits.

### For Research Use Only