

KIF1C Polyclonal Antibody

Catalog Number: E-AB-15156



Note: Centrifuge before opening to ensure complete recovery of vial contents.

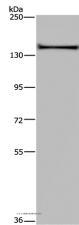
Description

Reactivity	Human, Mouse, Rat
Immunogen	Recombinant protein of human KIF1C
Host	Rabbit
Isotype	IgG
Purification	Affinity purification
Conjugation	Unconjugated
Formulation	PBS with 0.05% sodium azide and 50% glycerol, PH7.4

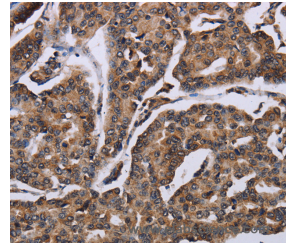
Applications Recommended Dilution

WB	1:200-1:1000
IHC	1:50-1:200

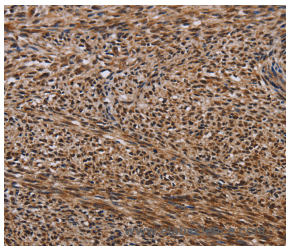
Data



Western Blot analysis of A549 cell using KIF1C Polyclonal Antibody at dilution of 1:200
Calculated Mw: 123kDa



Immunohistochemistry of paraffin-embedded Human breast cancer using KIF1C Polyclonal Antibody at dilution of 1:60



Immunohistochemistry of paraffin-embedded Human sarcoma using KIF1C Polyclonal Antibody at dilution of 1:60

Preparation & Storage

Storage Store at -20°C. Avoid freeze / thaw cycles.

Background

The kinesins constitute a large family of microtubule-dependent motor proteins, which are responsible for the distribution of numerous organelles, vesicles and macromolecular complexes throughout the cell. Individual kinesin members play crucial roles in cell division, intracellular transport, and membrane trafficking events including endocytosis and transcytosis. KIF1C is a member of the KIF1/Unc104 family of kinesin-like proteins, which are involved in the transport

For Research Use Only

A Reliable Research Partner in Life Science and Medicine

Toll-free: 1-888-852-8623

Web: www.elabscience.com

Tel: 1-832-243-6086

Email: techsupport@elabscience.com

Fax: 1-832-243-6017

KIF1C Polyclonal Antibody

Catalog Number: E-AB-15156



of mitochondria or synaptic vesicles in axons . Human KIF1C maps to chromosome 17p13 and encodes a predicted 1,103 amino acid protein with abundant expression in heart and skeletal muscle . Tyrosine phosphorylation is a putative regulator of KIF1C mediated retrograde transport of Golgi vesicles to the endoplasmic reticulum. KIF1C is capable of forming homodimers and can noncovalently associate with 14-3-3 beta, gamma, epsilon and zeta . In mouse macrophages, KIF1C is required for anthrax lethal toxin resistance.

For Research Use Only

A Reliable Research Partner in Life Science and Medicine

Toll-free: 1-888-852-8623

Tel: 1-832-243-6086

Fax: 1-832-243-6017

Web: www.elabscience.com

Email: techsupport@elabscience.com