

## Epiphycan/DSPG3 Monoclonal Antibody

**catalog number:** AN200232P

**Note:** Centrifuge before opening to ensure complete recovery of vial contents.

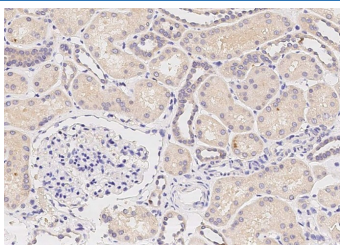
### Description

<b>Reactivity</b>	Human
<b>Immunogen</b>	Recombinant Human Epiphycan/DSPG3 Protein
<b>Host</b>	Mouse
<b>Isotype</b>	IgG1
<b>Clone</b>	5B13
<b>Purification</b>	Protein A
<b>Buffer</b>	0.2 µm filtered solution in PBS

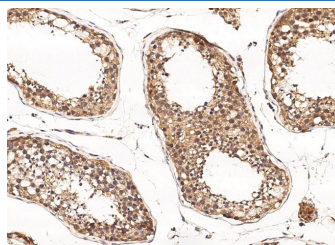
### Applications Recommended Dilution

<b>IHC-P</b>	1:50-1:200
--------------	------------

### Data



Immunohistochemistry of paraffin-embedded human kidney using Epiphycan/DSPG3 Monoclonal Antibody at dilution of 1:50.



Immunohistochemistry of paraffin-embedded human testis using Epiphycan/DSPG3 Monoclonal Antibody at dilution of 1:50.

### Preparation & Storage

<b>Storage</b>	This antibody can be stored at 2°C-8°C for one month without detectable loss of activity. Antibody products are stable for twelve months from date of receipt when stored at -20°C to -80°C. Preservative-Free. Avoid repeated freeze-thaw cycles.
<b>Shipping</b>	Ice bag

### Background

May have a role in bone formation and also in establishing the ordered structure of cartilage through matrix organization.

### For Research Use Only