

## PE/Cyanine7 Anti-Mouse CD161/NK1.1 Antibody[PK136]

Catalog Number: E-AB-F0987UH

Note: Centrifuge before opening to ensure complete recovery of vial contents.

### Description

|                                |  |
|--------------------------------|--|
| <b>Reactivity</b>              | Mouse  |
| <b>Host</b>                    | Mouse  |
| <b>Isotype</b>                 | Mouse IgG2a, κ   |
| <b>Clone No.</b>               | PK136  |
| <b>Isotype Control</b>         | PE/Cyanine7 Mouse IgG2a, κ Isotype Control[C1.18.4] [Product E-AB-F09803H]   |
| <b>Conjugation</b>             | PE/Cyanine 7   |
| <b>Conjugation Information</b> | PE/Cyanine7 is designed to be excited by the Blue (488 nm), Green (532 nm) and yellow-green (561 nm) lasers and detected using an optical filter centered near 775 nm (e.g., a 780/60 nm bandpass filter). |
| <b>Storage Buffer</b>          | Phosphate buffered solution, pH 7.2, containing 0.09% stabilizer and 1% protein protectant.  |

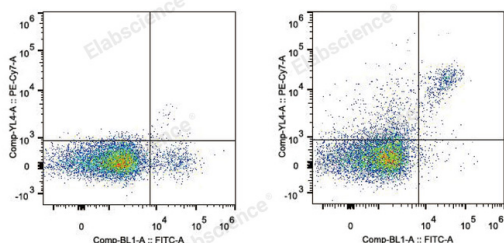
### Applications

#### FCM

### Recommended usage

Each lot of this antibody is quality control tested by flow cytometric analysis. Please check your vial before the experiment. Since applications vary, the appropriate dilutions must be determined for individual use. We suggest each investigator should titrate the reagent to obtain optimal results [The recommended concentration is 0.1-1 μg/10<sup>6</sup> cells in 100 μL volume].

### Data



C57BL/6 murine splenocytes are stained with PE/Cyanine7 Anti-Mouse CD161/NK1.1 Antibody and FITC Anti-Mouse CD49b Antibody (Right). Splenocytes stained with FITC Anti-Mouse CD49b Antibody (Left) are used as control.

### Preparation & Storage

|                 |   |
|-----------------|---|
| <b>Storage</b>  | Keep as concentrated solution.<br>This product can be stored at 2-8°C for 12 months. Please protected from prolonged exposure to light and do not freeze. |
| <b>Shipping</b> | Ice bag   |

### Antigen Information

|                        |   |
|------------------------|---|
| <b>Alternate Names</b> | CD161 antigen-like family member C;CD161;NK1.1;CD161c;Killer cell lectin-like receptor subfamily B member 1C;Klrh1c;Ly-55c;NKR-P1 40;NKR-P1.9;NKR-P1C |
|------------------------|---|

### For Research Use Only

**Uniprot ID**

P27814;P27812;Q99JB4

**Gene ID**

17059

**Background**

NK-1.1 surface antigen, also known as CD161b/CD161c and Ly-55, is encoded by the NKR-P1B/NKR-P1C gene. It is expressed on NK cells and NK-T cells in some mouse strains, including C57BL/6, FVB/N, and NZB, but not AKR, BALB/c, CBA/J, C3H, DBA/1, DBA/2, NOD, SJL, and 129. Expression of NKR-P1C antigen has been correlated with lysis of tumor cells in vitro and rejection of bone marrow allografts in vivo. NK-1.1 has also been shown to play a role in NK cell activation, IFN- $\gamma$  production, and cytotoxic granule release. NK-1.1 and DX5 are commonly used as mouse NK cell markers.

---

**For Research Use Only**