

Lamin B1 Monoclonal Antibody

catalog number: E-AB-20076

Note: Centrifuge before opening to ensure complete recovery of vial contents.

Description

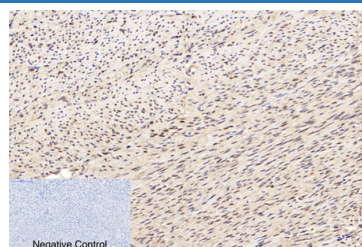
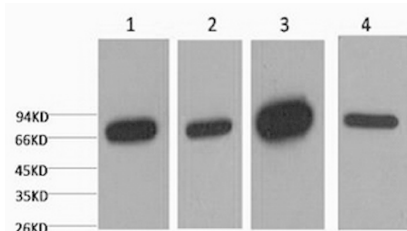
Reactivity	Human;Mouse;Rat
Immunogen	Recombinant Protein
Host	Mouse
Isotype	IgG
Clone	4K2
Purification	Protein A purification
Conjugation	Unconjugated
buffer	Phosphate buffered solution, pH 7.4, containing 0.05% stabilizer, 0.5% protein protectant and 50% glycerol.

Applications

Recommended Dilution

WB	1:500-1:2000
IHC	1:50-300
IF	1:50-1:200
IP	1:100-1:300

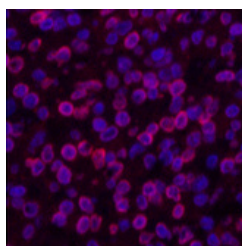
Data



Western Blot analysis of 1) HepG2, 2) 293T, 3) Mouse brain, 4) Rat brain using Lamin B1 Monoclonal Antibody at dilution of 1:5000. Immunohistochemistry of paraffin-embedded Human uterus tissue using Lamin B1 Monoclonal Antibody at dilution of 1:200.

Observed-MV:68 kDa

Calculated-MV:66 kDa



Immunofluorescence analysis of Human lung cancer tissue using Lamin B1 Monoclonal Antibody at dilution of 1:200.

Preparation & Storage

Storage	Store at -20°C Valid for 12 months. Avoid freeze / thaw cycles.
Shipping	The product is shipped with ice pack, upon receipt, store it immediately at the temperature recommended.

Background

For Research Use Only

Lamin B1 Monoclonal Antibody

catalog number: E-AB-20076



Lamins are components of the nuclear lamina, a fibrous layer on the nucleoplasmic side of the inner nuclear membrane, which is thought to provide a framework for the nuclear envelope and may also interact with chromatin.

For Research Use Only

A Reliable Research Partner in Life Science and Medicine
Tel: 400-999-2100

Email: techsupport@elabscience.cn

Web: www.elabscience.cn

Rev. V1.7