

GPR142 Polyclonal Antibody

Catalog Number: E-AB-18039



Note: Centrifuge before opening to ensure complete recovery of vial contents.

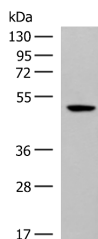
Description

Reactivity	Human
Immunogen	Synthetic peptide of human GPR142
Host	Rabbit
Isotype	IgG
Purification	Antigen affinity purification
Conjugation	Unconjugated
Formulation	PBS with 0.05% NaN ₃ and 40% Glycerol, pH7.4

Applications Recommended Dilution

WB	1:500-1:2000
ELISA	1:5000-1:10000

Data



Western blot analysis of Hela cell lysate using GPR142 Polyclonal Antibody at dilution of 1:400

Observed MW: Refer to figures

Calculated Mw: 51 kDa

Preparation & Storage

Storage Store at -20°C. Avoid freeze / thaw cycles.

Background

GPR142 is a member of the rhodopsin family of G protein-coupled receptors (GPRs).

For Research Use Only

A Reliable Research Partner in Life Science and Medicine

Toll-free: 1-888-852-8623

Web: www.elabscience.com

Tel: 1-832-243-6086

Email: techsupport@elabscience.com

Fax: 1-832-243-6017