

MTA2 Polyclonal Antibody

catalog number: E-AB-19422

Note: Centrifuge before opening to ensure complete recovery of vial contents.

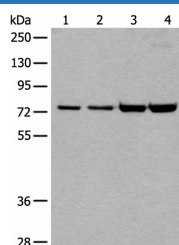
Description

Reactivity	Human;Mouse
Immunogen	Synthetic peptide of human MTA2
Host	Rabbit
Isotype	IgG
Purification	Antigen affinity purification
Conjugation	Unconjugated
buffer	Phosphate buffered solution, pH 7.4, containing 0.05% stabilizer and 50% glycerol.

Applications

WB	1:500-1:2000
IHC	1:25-1:100

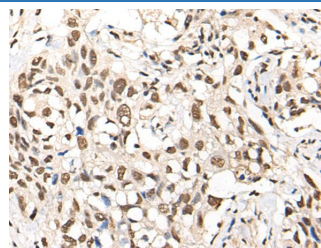
Data



Western blot analysis of 293T and Hela cell lysates using MTA2 Polyclonal Antibody at dilution of 1:400

Observed-MV:Refer to figures

Calculated-MV:75 kDa



Immunohistochemistry of paraffin-embedded Human lung cancer tissue using MTA2 Polyclonal Antibody at dilution of 1:40(×200)

Preparation & Storage

Storage	Store at -20°C Valid for 12 months. Avoid freeze / thaw cycles.
Shipping	The product is shipped with ice pack,upon receipt,store it immediately at the temperature recommended.

Background

Metastasis-associated protein MTA2,also named as MTA1L1 or PID,is a 668 amino acid protein,which contains one BAH domain,one ELM2 domain,one GATA-type zinc finger and one SANT domain. MTA2 localizes in the nucleus and is widely expressed in many tissues. MTA2 may be involved in the regulation of gene expression as repressor and activator.

For Research Use Only