

RPL10A Polyclonal Antibody

catalog number: E-AB-19177

Note: Centrifuge before opening to ensure complete recovery of vial contents.

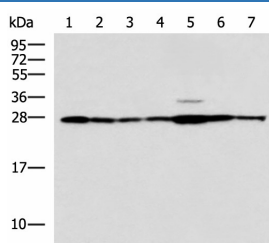
Description

Reactivity	Human;Mouse;Rat
Immunogen	Fusion protein of human RPL10A
Host	Rabbit
Isotype	IgG
Purification	Antigen affinity purification
Conjugation	Unconjugated
buffer	Phosphate buffered solution, pH 7.4, containing 0.05% stabilizer and 50% glycerol.

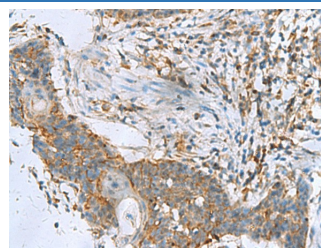
Applications

WB	1:500-1:2000
IHC	1:50-1:200

Data



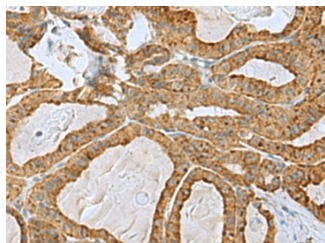
Western blot analysis of Rat liver tissue Mouse kidney tissue
Mouse lung tissue HUVEC Jurkat Hela HepG2 cell lysates
using RPL10A Polyclonal Antibody at dilution of 1:700



Immunohistochemistry of paraffin-embedded Human
esophagus cancer tissue using RPL10A Polyclonal Antibody
at dilution of 1:50(×200)

Observed-MV:Refer to figures

Calculated-MV:25 kDa



Immunohistochemistry of paraffin-embedded Human thyroid
cancer tissue using RPL10A Polyclonal Antibody at dilution
of 1:50(×200)

Preparation & Storage

Storage	Store at -20°C Valid for 12 months. Avoid freeze / thaw cycles.
Shipping	The product is shipped with ice pack,upon receipt,store it immediately at the temperature recommended.

Background

For Research Use Only

RPL10A Polyclonal Antibody

catalog number: E-AB-19177



Ribosomes, the organelles that catalyze protein synthesis, consist of a small 40S subunit and a large 60S subunit. Together these subunits are composed of 4 RNA species and approximately 80 structurally distinct proteins. This gene encodes a ribosomal protein that is a component of the 60S subunit. The protein belongs to the L1P family of ribosomal proteins. It is located in the cytoplasm. The expression of this gene is downregulated in the thymus by cyclosporin-A (CsA), an immunosuppressive drug. Studies in mice have shown that the expression of the ribosomal protein L10a gene is downregulated in neural precursor cells during development. This gene previously was referred to as NEDD6 (neural precursor cell expressed, developmentally downregulated 6), but it has been renamed RPL10A (ribosomal protein 10a). As is typical for genes encoding ribosomal proteins, there are multiple processed pseudogenes of this gene dispersed through the genome.

For Research Use Only

A Reliable Research Partner in Life Science and Medicine
Tel: 400-999-2100

Email: techsupport@elabscience.cn

Web: www.elabscience.cn

Rev. V2.7