

POLH Polyclonal Antibody

catalog number: E-AB-52741

Note: Centrifuge before opening to ensure complete recovery of vial contents.

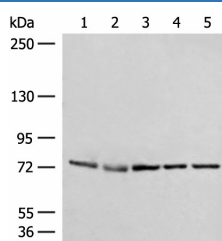
Description

Reactivity	Human;Mouse
Immunogen	Fusion protein of human POLH
Host	Rabbit
Isotype	IgG
Purification	Antigen affinity purification
Conjugation	Unconjugated
buffer	Phosphate buffered solution, pH 7.4, containing 0.05% stabilizer and 50% glycerol.

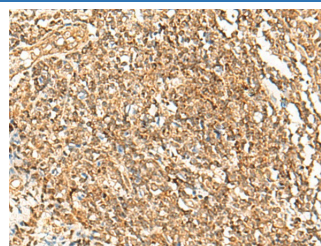
Applications

WB	1:500-1:2000
IHC	1:50-1:300

Data



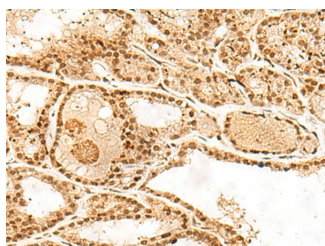
Western blot analysis of A172 231 Jurkat HepG2 and Hela cell lysates using POLH Polyclonal Antibody at dilution of 1:300



Immunohistochemistry of paraffin-embedded Human tonsil tissue using POLH Polyclonal Antibody at dilution of 1:45(×200)

Observed-MV:Refer to figures

Calculated-MV:78 kDa



Immunohistochemistry of paraffin-embedded Human thyroid cancer tissue using POLH Polyclonal Antibody at dilution of 1:45(×200)

Preparation & Storage

Storage	Store at -20°C Valid for 12 months. Avoid freeze / thaw cycles.
Shipping	The product is shipped with ice pack, upon receipt, store it immediately at the temperature recommended.

Background

For Research Use Only

POLH Polyclonal Antibody

catalog number: E-AB-52741



This gene encodes a member of the Y family of specialized DNA polymerases. It copies undamaged DNA with a lower fidelity than other DNA-directed polymerases. However, it accurately replicates UV-damaged DNA; when thymine dimers are present, this polymerase inserts the complementary nucleotides in the newly synthesized DNA, thereby bypassing the lesion and suppressing the mutagenic effect of UV-induced DNA damage. This polymerase is thought to be involved in hypermutation during immunoglobulin class switch recombination. Mutations in this gene result in XPV, a variant type of xeroderma pigmentosum. Several transcript variants encoding different isoforms have been found for this gene.

For Research Use Only

A Reliable Research Partner in Life Science and Medicine
Tel: 400-999-2100

Email: techsupport@elabscience.cn

Web: www.elabscience.cn

Rev. V1.7