

GP6 Polyclonal Antibody

Catalog Number: E-AB-19916



Note: Centrifuge before opening to ensure complete recovery of vial contents.

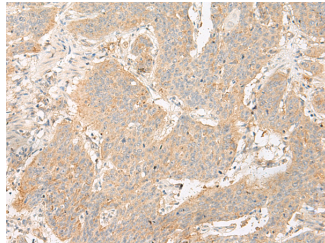
Description

| | |
|---------------------|---|
| Reactivity | Human |
| Immunogen | Synthetic peptide of human GP6 |
| Host | Rabbit |
| Isotype | IgG |
| Purification | Antigen affinity purification |
| Conjugation | Unconjugated |
| Formulation | PBS with 0.05% NaN ₃ and 40% Glycerol, pH7.4 |

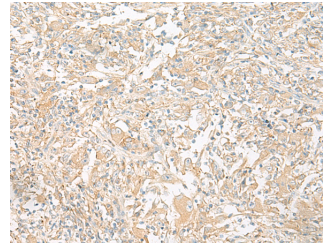
Applications Recommended Dilution

| | |
|--------------|----------------|
| IHC | 1:40-1:200 |
| ELISA | 1:5000-1:10000 |

Data



Immunohistochemistry of paraffin-embedded Human esophagus cancer tissue using GP6 Polyclonal Antibody at dilution of 1:40 (x200)



Immunohistochemistry of paraffin-embedded Human liver cancer tissue using GP6 Polyclonal Antibody at dilution of 1:40 (x200)

Preparation & Storage

Storage Store at -20°C. Avoid freeze / thaw cycles.

Background

This gene encodes a platelet membrane glycoprotein of the immunoglobulin superfamily. The encoded protein is a receptor for collagen and plays a critical role in collagen-induced platelet aggregation and thrombus formation. The encoded protein forms a complex with the Fc receptor gamma-chain that initiates the platelet activation signaling cascade upon collagen binding. Mutations in this gene are a cause of platelet-type bleeding disorder-11 (BDPLT11). Alternatively spliced transcript variants encoding multiple isoforms have been observed for this gene.

For Research Use Only

A Reliable Research Partner in Life Science and Medicine

Toll-free: 1-888-852-8623

Web: www.elabscience.com

Tel: 1-832-243-6086

Email: techsupport@elabscience.com

Fax: 1-832-243-6017