

# Recombinant Human LYVE1/HAR Protein (His Tag)

Catalog Number:PKSH032725



**Note:** Centrifuge before opening to ensure complete recovery of vial contents.

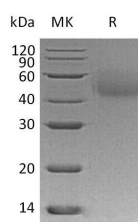
## Description

|                                    |   |
|------------------------------------|---|
| <b>Synonyms</b>                    | Lymphatic Vessel Endothelial Hyaluronic Acid Receptor 1;LYVE-1;Cell Surface Retention Sequence-Binding Protein 1;CRSBP-1;Extracellular Link Domain-Containing Protein 1;Hyaluronic Acid Receptor;LYVE1;CRSBP1;HAR;XLKD1 |
| <b>Species</b>                     | Human   |
| <b>Expression Host</b>             | HEK293 Cells  |
| <b>Sequence</b>                    | Leu20-Thr 238   |
| <b>Accession</b>                   | AAH26231.1  |
| <b>Calculated Molecular Weight</b> | 24.6 kDa  |
| <b>Observed molecular weight</b>   | 46 kDa  |
| <b>Tag</b>                         | C-His   |

## Properties

|                       |   |
|-----------------------|---|
| <b>Purity</b>         | > 95 % as determined by reducing SDS-PAGE.  |
| <b>Endotoxin</b>      | < 1.0 EU per µg of the protein as determined by the LAL method.   |
| <b>Storage</b>        | Generally, lyophilized proteins are stable for up to 12 months when stored at -20 to -80°C. Reconstituted protein solution can be stored at 4-8°C for 2-7 days. Aliquots of reconstituted samples are stable at < -20°C for 3 months.                         |
| <b>Shipping</b>       | This product is provided as lyophilized powder which is shipped with ice packs.   |
| <b>Formulation</b>    | Lyophilized from a 0.2 µm filtered solution of 20mM Tris-Citrate, 150mM NaCl, pH 7.0.<br>Normally 5 % - 8 % trehalose, mannitol and 0.01% Tween80 are added as protectants before lyophilization.<br>Please refer to the specific buffer information in the p |
| <b>Reconstitution</b> | Please refer to the printed manual for detailed information.  |

## Data



> 95 % as determined by reducing SDS-PAGE.

## Background

Lymphatic Vessel Endothelial Hyaluronic Acid Receptor 1 is a single-pass type I membrane protein. LYVE-1 is a CD44 homolog found primarily on lymphatic endothelial cells. LYVE-1 is mainly expressed in endothelial cells lining lymphatic vessels. While LYVE-1 function is a Ligand-specific transporter trafficking between intracellular organelles (TGN) and the plasma membrane. LYVE-1 plays a role in autocrine regulation of cell growth mediated by growth regulators containing cell surface retention sequence binding (CRS). It may act as an hyaluronan (HA) transporter, either mediating

## For Research Use Only

A Reliable Research Partner in Life Science and Medicine

Toll-free: 1-888-852-8623

Web: [www.elabscience.com](http://www.elabscience.com)

Tel: 1-832-243-6086

Email: [techsupport@elabscience.com](mailto:techsupport@elabscience.com)

Fax: 1-832-243-6017

# Recombinant Human LYVE1/HAR Protein (His Tag)

Catalog Number:PKSH032725



its uptake for catabolism within lymphatic endothelial cells themselves, or its transport into the lumen of afferent lymphatic vessels for subsequent re-uptake and degradation in lymph nodes.

---

## For Research Use Only

A Reliable Research Partner in Life Science and Medicine

Toll-free: 1-888-852-8623

Web: [www.elabscience.com](http://www.elabscience.com)

Tel: 1-832-243-6086

Email: [techsupport@elabscience.com](mailto:techsupport@elabscience.com)

Fax: 1-832-243-6017