

Recombinant Human CXCL3/GRO gamma Protein (His Tag)



Catalog Number:PKSH032300

Note: Centrifuge before opening to ensure complete recovery of vial contents.

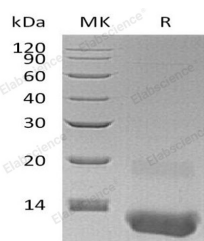
Description

Synonyms	C-X-C Motif Chemokine 3;GRO-Gamma (1-73);Growth-Regulated Protein Gamma;GRO-Gamma;Macrophage Inflammatory Protein 2-Beta;MIP2-Beta;GRO-Gamma (5-73);CXCL3;GRO3;GROG;SCYB3
Species	Human
Expression Host	E.coli
Sequence	Ala35-Asn107
Accession	P19876
Calculated Molecular Weight	8.7 kDa
Observed molecular weight	11 kDa
Tag	N-His
Bioactivity	Measure by its ability to chemoattract BaF3 cells transfected with human CXCR2.The ED ₅₀ for this effect is < 2 ng/mL.

Properties

Purity	> 98 % as determined by reducing SDS-PAGE.
Endotoxin	< 0.1 EU per µg of the protein as determined by the LAL method.
Storage	Generally, lyophilized proteins are stable for up to 12 months when stored at -20 to -80°C. Reconstituted protein solution can be stored at 4-8°C for 2-7 days. Aliquots of reconstituted samples are stable at < -20°C for 3 months.
Shipping	This product is provided as lyophilized powder which is shipped with ice packs.
Formulation	Lyophilized from sterile PBS, pH 7.4. Normally 5 % - 8 % trehalose, mannitol and 0.01 % Tween80 are added as protectants before lyophilization. Please refer to the specific buffer information in the printed manual.
Reconstitution	Please refer to the printed manual for detailed information.

Data



> 98 % as determined by reducing SDS-PAGE.

Background

C-X-C Motif Chemokine 3 (CXCL3) is a secreted protein that belongs to the intercrine alpha (chemokine CXC) family. CXCL3 controls the migration and adhesion of monocytes and mediates its effect on its target cell by interacting with a cell surface chemokine receptor called CXCR2. In addition, CXCL3 is thought to play a role in inflammation and exert its effects on endothelial cells in an autocrine fashion.

For Research Use Only

A Reliable Research Partner in Life Science and Medicine

Toll-free: 1-888-852-8623

Web: www.elabscience.com

Tel: 1-832-243-6086

Email: techsupport@elabscience.com

Fax: 1-832-243-6017