

WDSUB1 Polyclonal Antibody

Catalog Number: E-AB-53557



Note: Centrifuge before opening to ensure complete recovery of vial contents.

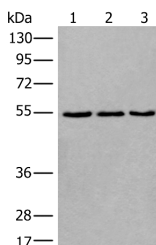
Description

Reactivity	Human, Mouse
Immunogen	Synthetic peptide of human WDSUB1
Host	Rabbit
Isotype	IgG
Purification	Antigen affinity purification
Conjugation	Unconjugated
Formulation	PBS with 0.05% NaN ₃ and 40% Glycerol, pH7.4

Applications Recommended Dilution

WB	1:500-1:2000
ELISA	1:5000-1:10000

Data



Western blot analysis of 293T NIH/3T3 and K562 cell lysates using WDSUB1 Polyclonal Antibody at dilution of 1:500

Observed Mw: Refer to figures
Calculated Mw: 53 kDa

Preparation & Storage

Storage Store at -20°C. Avoid freeze / thaw cycles.

Background

WDSUB1 (WD repeat, SAM and U-box domain-containing protein 1), also known as UBOX6 or WDSAM1, is a 476 amino acid protein that contains one SAM (sterile alpha motif) domain, one U-box domain and seven WD repeats. Existing as two isoforms due to alternative splicing, WDSUB1 is encoded by a gene located on chromosome 2. The second largest human chromosome, chromosome 2 encodes over 1,400 genes and comprises nearly 8% of the human genome, housing a number of disease-associated genes. Harlequin ichthyosis, a rare and morbid skin deformity, is associated with mutations in the ABCA12 gene, while the lipid metabolic disorder sitosterolemia is associated with defects in the ABCG5 and ABCG8 genes. Additionally, an extremely rare recessive genetic disorder, Alström syndrome, is caused by mutations in the ALMS1 gene, which maps to chromosome 2.

For Research Use Only

A Reliable Research Partner in Life Science and Medicine

Toll-free: 1-888-852-8623

Web: www.elabscience.com

Tel: 1-832-243-6086

Email: techsupport@elabscience.com

Fax: 1-832-243-6017