

KCTD7 Polyclonal Antibody

catalog number: E-AB-52089

Note: Centrifuge before opening to ensure complete recovery of vial contents.

Description

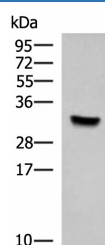
Reactivity	Human;Mouse;Rat
Immunogen	Synthetic peptide of human KCTD7
Host	Rabbit
Isotype	IgG
Purification	Antigen affinity purification
Conjugation	Unconjugated
buffer	Phosphate buffered solution, pH 7.4, containing 0.05% stabilizer and 50% glycerol.

Applications

Recommended Dilution

WB	1:500-1:2000
-----------	--------------

Data



Western blot analysis of Hela cell lysate using KCTD7

Polyclonal Antibody at dilution of 1:1000

Observed-MV: Refer to figures

Calculated-MV: 33 kDa

Preparation & Storage

Storage	Store at -20°C Valid for 12 months. Avoid freeze / thaw cycles.
Shipping	The product is shipped with ice pack, upon receipt, store it immediately at the temperature recommended.

Background

KCTD7 (Potassium Channel Tetramerization Domain Containing 7) is a Protein Coding gene. Diseases associated with KCTD7 include Epilepsy, Progressive Myoclonic 3, With Or Without Intracellular Inclusions and Cln14 Disease. Among its related pathways are Neuropathic Pain-Signaling in Dorsal Horn Neurons and Innate Immune System. An important paralog of this gene is KCTD14. This gene encodes a member of the potassium channel tetramerization domain-containing protein family. Family members are identified on a structural basis and contain an amino-terminal domain similar to the T1 domain present in the voltage-gated potassium channel. Mutations in this gene have been associated with progressive myoclonic epilepsy-3. Alternative splicing results in multiple transcript variants.

For Research Use Only