

CRMP1 Polyclonal Antibody

catalog number: E-AB-12333

Note: Centrifuge before opening to ensure complete recovery of vial contents.

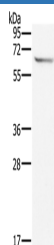
Description

Reactivity	Human;Mouse;Rat
Immunogen	Synthetic peptide of human CRMP1
Host	Rabbit
Isotype	IgG
Purification	Affinity purification
Conjugation	Unconjugated
buffer	Phosphate buffered solution, pH 7.4, containing 0.05% stabilizer and 50% glycerol.

Applications

Applications	Recommended Dilution
WB	1:500-1:1000

Data



Western Blot analysis of Mouse brain tissue using CRMP1

Polyclonal Antibody at dilution of 1:500

Calculated-MV:62 kDa

Preparation & Storage

Storage	Store at -20°C Valid for 12 months. Avoid freeze / thaw cycles.
Shipping	The product is shipped with ice pack, upon receipt, store it immediately at the temperature recommended.

Background

Collapsin response mediator protein 1, encoded by the CRMP1 gene, is a human protein of the CRMP family. This gene encodes a member of a family of cytosolic phosphoproteins expressed exclusively in the nervous system. The encoded protein is thought to be a part of the semaphorin signal transduction pathway implicated in semaphorin-induced growth cone collapse during neural development. Alternative splicing results in multiple transcript variants. CRMP1 mediates reelin signaling in cortical neuronal migration. Mice deficient in CRMP1 exhibit impaired long-term potentiation and impaired spatial learning and memory. CRMP1 gene overlaps with another gene called EVC. CRMP1 has been shown to interact with DPYSL2.

For Research Use Only