

PCNA Monoclonal Antibody

Catalog Number:E-AB-22001

Note: Centrifuge before opening to ensure complete recovery of vial contents.

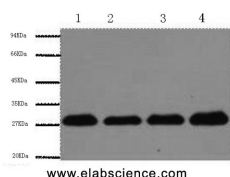
Description

Reactivity	Human,Mouse,Rat
Immunogen	Synthetic Peptide
Host	Mouse
Isotype	IgG
Clone	Clone:1A1
Purification	Protein A purification
Conjugation	Unconjugated
Formulation	PBS with 0.02% sodium azide and 50% glycerol pH 7.4.

Applications Recommended Dilution

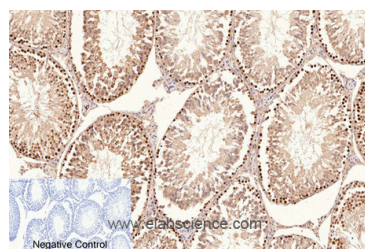
WB	1:5000-1:10000
IHC	1:100-1:300
IF	1:100-1:300

Data

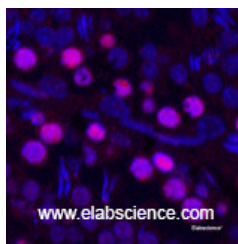


Western Blot analysis of Hela, Rat brain, NIH, 3T3, 293T using Proliferating Cell Nuclear Antigen Monoclonal Antibody at dilution of 1:5000.

Observed Mw:29kDa
Calculated Mw:29kDa



Immunohistochemistry of paraffin-embedded Rat testis tissue using Proliferating Cell Nuclear Antigen Monoclonal Antibody at dilution of 1:200.



Immunofluorescence analysis of Rat testis tissue using Proliferating Cell Nuclear Antigen Monoclonal Antibody at dilution of 1:200.

Preparation & Storage

Storage Store at -20°C. Avoid freeze / thaw cycles.

For Research Use Only

A Reliable Research Partner in Life Science and Medicine

Toll-free: 1-888-852-8623

Web: www.elabscience.com

Tel: 1-832-243-6086

Email: techsupport@elabscience.com

Fax: 1-832-243-6017

PCNA Monoclonal Antibody

Catalog Number:E-AB-22001



Background

This protein is an auxiliary protein of DNA polymerase delta and is involved in the control of eukaryotic DNA replication by increasing the polymerase's processibility during elongation of the leading strand. Induces a robust stimulatory effect on the 3'-5' exonuclease and 3'-phosphodiesterase, but not apurinic-apyrimidinic (AP) endonuclease, APEX2 activities. Has to be loaded onto DNA in order to be able to stimulate APEX2.

For Research Use Only

A Reliable Research Partner in Life Science and Medicine

Toll-free: 1-888-852-8623

Web: www.elabscience.com

Tel: 1-832-243-6086

Email: techsupport@elabscience.com

Fax: 1-832-243-6017