

## Recombinant BMP-2 Monoclonal Antibody

**catalog number: AN300061P**

**Note:** *Centrifuge before opening to ensure complete recovery of vial contents.*

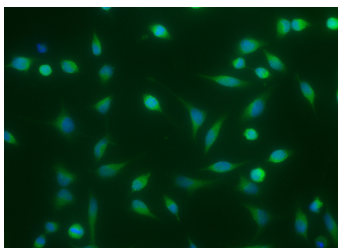
### Description

<b>Reactivity</b>	Human;Mouse;Rat;Rhesus;Canine
<b>Immunogen</b>	Recombinant Human / Mouse / Rat / Rhesus / Canine BMP-2 protein
<b>Host</b>	Rabbit
<b>Isotype</b>	IgG
<b>Clone</b>	6A4
<b>Purification</b>	Protein A
<b>Buffer</b>	0.2 µm filtered solution in PBS

### Applications Recommended Dilution

ICC/IF	1:20-1:100
--------	------------

### Data



Immunofluorescence analysis of Human BMP2 in HeLa cells. Cells were fixed with 4% PFA, permeabilized with 1% Triton X-100 in PBS, blocked with 10% serum, and incubated with rabbit anti-Human BMP2 Monoclonal Antibody (1:60) at 37°C 1 hour. Then cells were stained with the Alexa Fluor® 488-conjugated Goat Anti-rabbit IgG secondary antibody (green) and counterstained with DAPI for nuclear staining (blue). Positive staining was localized to cytoplasm.

### Preparation & Storage

<b>Storage</b>	This antibody can be stored at 2°C-8°C for one month without detectable loss of activity. Antibody products are stable for twelve months from date of receipt when stored at -20°C to -80°C. Preservative-Free. Avoid repeated freeze-thaw cycles.
<b>Shipping</b>	Ice bag

### Background

BMP-2 is one of at least 15 structurally and functionally related BMPs, which are members of the transforming growth factor beta (TGF-beta) superfamily. BMPs were originally identified as protein regulators of cartilage and bone formation. However, they have since been shown to be involved in embryogenesis and morphogenesis of various tissues and organs.

### For Research Use Only