

Recombinant Nucleolin Monoclonal Antibody

catalog number: **AN300962L**

Note: Centrifuge before opening to ensure complete recovery of vial contents.

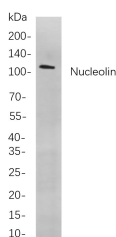
Description

Reactivity	Human;Mouse
Immunogen	Recombinant Human Nucleolin protein
Host	Rabbit
Isotype	IgG, κ
Clone	B713
Purification	Protein A
Buffer	PBS, 50% glycerol, 0.05% Proclin 300, 0.05% protein protectant.

Applications Recommended Dilution

IHC	1:200-1:1000
WB	1:500-1:2000
IF	1:200-1:1000
ELISA	1:5000-1:20000
IP	1:50-1:200,

Data



Western Blot with Recombinant Nucleolin Monoclonal Antibody at dilution of 1:1000 dilution. Lane A: A549 cells.

Observed-MW:110 kDa

Calculated-MW:77 kDa

Preparation & Storage

Storage	Store at -20°C Valid for 12 months. Avoid freeze / thaw cycles.
Shipping	Ice bag

Background

Nucleolin (NCL), a eukaryotic nucleolar phosphoprotein, is involved in the synthesis and maturation of ribosomes. It is located mainly in dense fibrillar regions of the nucleolus. Human NCL gene consists of 14 exons with 13 introns and spans approximately 11kb. The intron 11 of the NCL gene encodes a small nucleolar RNA, termed U20.

For Research Use Only

Toll-free: 1-888-852-8623
Web: www.elabscience.com

Tel: 1-832-243-6086
Email: techsupport@elabscience.com

Fax: 1-832-243-6017

Rev. V1.2